

**2019**

**LANCEFIELD BRAHMAN**  
*Invitation Sale*

**GRACEMERE › ROCKHAMPTON › QUEENSLAND**



**9:00<sup>AM</sup> MONDAY 28<sup>TH</sup> OCTOBER**

# Here to help make our farmers stronger.

**Speak to your local Agribusiness  
specialists today.**

**Maxine Austin**

Rockhampton

Call 0418 279 929

**Dave Wilson**

Rockhampton

Call 0466 409 631

**Greg Twist**

Emerald

Call 0427 153 959

**Cameron Heath**

Emerald

Call 0459 076 713



**200 years**  
proudly supporting Australia

# LANCEFIELD BRAHMAN'S

## *Invitation Sale*

GRACEMERE – ROCKHAMPTON – QUEENSLAND

**9am, Monday 28th October, 2019**

*Our 45th Offering  
of Quality Brahman's*

- **106 Grey Brahman Bulls  
(inc. 21 Poll/Scurr)**

#### SALE PRINCIPALS

Scott & Lizette McCamley, Lancefield, Dululu 07-49371160 0429-371202  
Matthew & Janelle McCamley, Eulogie, Dululu 07-49371180 0429-371180

#### INVITED VENDORS

Andrew & Anna McCamley, 2AM Stud, Dingo 07-49873083 0427-852894  
David & Julie McCamley, Palmal Stud, Dingo 07-49873068 0429-873068  
Rodger & Lorena Jefferis, Elrose Stud, Cloncurry 07-4746 8467 0417-468467

#### PRE-SALE INSPECTION

Pre-Sale inspections are invited and welcome at any time by contacting the Vendors or Sale Agents.  
**Sale lots are available for inspection at Gracemere Saleyards 1:00pm to 5:00pm on Sunday 27th October.**  
It is recommended that this is an ideal time to carry out an assessment of the Sale team.

#### SELLING AGENTS



ROCKHAMPTON  
Ken McCaffrey  
Office: 07-49226311  
A/hrs: 07-49224613  
Mobile: 0418-792770



MOURA  
Office: 07-49972227  
Brad Passfield: 0459-160791  
Gary Bishop: 0439-982588  
Matt Bishop: 0437-972292

**BUYERS BENEFIT!!**  
PRE-SALE VIDEOS OF SALE BULLS ONLINE  
LOG ON  
[www.lancefieldbrahmans.com.au](http://www.lancefieldbrahmans.com.au)

**ALL BULLS tested  
SEMEN MORPHOLOGY**

# SALE INFORMATION

---

## **PRE-SALE VIDEOS OF SALE BULLS ONLINE **NEW - FOR BUYERS BENEFIT****

As a further service to prospective purchasers, a sizable selection of videos of Sale bulls can be viewed online throughout October. Log on to the Sale website [www.lancefieldbrahmans.com.au](http://www.lancefieldbrahmans.com.au) where you can view top Sale bulls from Lancefield, Lancefield M, Palmal, 2AM and Elrose Studs.

---

## **INSPECTION OF BULLS**

Sale bulls will be penned and available for inspection at Gracemere Saleyards the day before the Sale, Sunday 27th October, and from 6am on Sale morning. Sale Vendors and their representatives will be in attendance at the pens. We pride ourselves on the excellent temperament of our bulls, however, please be aware bulls may fight with each other or be playful. Before entering Sale pens, please ask Vendor Representatives to accompany you.

---

## **ONLINE BIDDING**

Online Bidding is available through the CQLX online bidding platform.

**Intending Bidders need to register to participate in the bidding.**

Visit [www.rlx.com.au](http://www.rlx.com.au) to find the Lancefield Brahmans Invitation Sale on the RLX Sales page.

Full details are outlined on page 13 of this catalogue.

---

## **HEALTH**

Brahman Group Breedplan EBV's in the catalogue were current at the time of printing and are only a representation of six traits and two indices.

**Full and up-to-date EBV's for all lots in this Sale can be accessed via the ABBA database [www.brahman.com.au](http://www.brahman.com.au)**

All Sale bulls are semen tested, vaccinated for Botulism and 3 Day Sickness. All Sale bulls have been pre-Sale tick treated in accordance with QDAFF regulations to allow a clearance dip for immediate movement into clean country.

**NOTE: UPGRADED FERTILITY ASSESSMENT - ALL BULLS SEMEN MORPHOLOGY TESTED.**

---

## **SALE PHOTOS & VIDEOS**

A sizable selection of over 30 photos of Sale bulls is printed in the colour centre pages of this catalogue and on the front and back covers. Additional photos of Sale bulls are available online.

**Log on to [www.lancefieldbrahmans.com.au](http://www.lancefieldbrahmans.com.au) for more updated photos and for videos of over 30 Sale bulls prior to Sale day.**

---

## **DELIVERY**

This Sale is committed to arranging, on buyers' written instructions, the most efficient, safe and cost effective delivery of bulls to buyers' properties. Vendors' trucks returning home will undertake deliveries at no cost to drop off points in C.Q. areas of – Biloela/Moura – Dingo/Middlemount/Nebo. Vendors also offer free delivery for Sale bulls to Charters Towers via drop off points at Emerald and Clermont.

---

## **SUPPLEMENTARY INFO**

Contact McCaffrey's Australian Livestock Marketing, Rockhampton 07-4922 6311 from Wednesday 23rd October and we can arrange to email or fax you a supplementary sheet of weights, dentition, carcass scans, scrotal and semen data.

---

## **REBATES**

An Outside Agents Rebate of 2 ½ % will be allowed to **Outside Agents introducing approved buyers in writing 24 hours prior to the Sale**, accompanying them to the Sale, and for whom settlement of their purchases is made within 7 days of Sale date.

# WELCOME

---

The Lancefield Brahmans Invitation Sale team invite you to our 2019 Sale and we look forward to welcoming you to Gracemere Saleyards on Monday 28th October when we present our Sale draft of 106 Grey Brahman Bulls.

As always, the offering includes Sire prospects that Studmasters will well recognise the valuable seedstock production credentials of, as well as dozens and dozens of young, working age, high quality, excellent temperament bulls equipped with all the beef and carcass performance attributes essential to deliver commercial herd results at the top level of the industry.

Aligned with our policy of progress to bring more Sale benefits to buyers, we advise that this year **all bulls offered have been Semen Morphology Tested and that the bulls of four of the Sale's five Vendor Studs are W.A. Eligible.**

These introductions come on top of this Sale's most comprehensive 'Information Package' of data, etc. available on each lot to assist buyers in your Sale purchasing. Full damline breeding history, Group Breedplan EBV's, photos and videos of many Sale lots, as well as weight, dentition, carcass and fertility measurements all add up to you having as much information as we have on each Lot, to do valuable pre-Sale research. Logon to our Sale website page to check out the online videos throughout October **[www.lancefieldbrahmans.com.au/lancefieldSales](http://www.lancefieldbrahmans.com.au/lancefieldSales)**

It is most encouraging that the 'Brahman preferred' live cattle export industry is doing big business in the North, and has remained a valuable backbone of the market for some time. That has been particularly beneficial to producers in the Central and North, subject in recent times to wide seasonal extremes. Unplanned sales of stock due to weather related factors generally, at least have been made at good market rates. The fact that meat processing companies are engaging with, and selling product to an increasing number of new overseas customers **also indicates demand for our highly regarded Australian beef will remain high.** Like all recipes, for the producers' currently experiencing drought and dry, the key ingredient is 'just add water'.

You will note on Page 1 that this is the 45th 'Lancefield' Sale offering, so these Brahmans, and this Sale, have 'weathered' many drought years, wet years, good cattle market years, ordinary cattle market years and a Beef Depression in the '70's. Through that long period we, and all the cattle producers we know, have found that **there is no substitute for strong, proven, superior genetics to progress herd performance.**

Lancefield, Lancefield M, 2AM, Palmal and Elrose Studs are proud to again offer you their Beef Brahman genetics, formed by decades of measurement and selection for high level Beef Industry performance in Northern Australia.

**We look forward to showing you our Sale team on Sunday afternoon 27th and Monday 28th October.**

## NOTE

Sale bulls from the following drafts are

**WA ELIGIBLE**

**Lancefield • Lancefield M • 2AM • Elrose**

**LANCEFIELD BRAHMAN'S**  
*Invitation Sale*

**JOIN US  
AFTER THE  
SALE!**

As our Sale is expected to conclude around lunch time,  
all Sale visitors are invited to join us for post Sale refreshments, snacks and sandwiches  
at the Gracemere Hotel following the conclusion of selling.



A/c Palmal Stud, Palmal, Dingo.

## LOT 1 PALMAL HOUSTON 8529

H.B. DJM8529M(REG) Calved: 04.09.17 (25 mths) Colour: Grey

S. JDH Mr Brahman Manso 175  
S. JDH Sir Liberty Manso 847/5  
D. JDH Lady Remington Mans 194/4

**Sire: JDH SIR HUDSON MANSO 596/7 (IMP)**

S. TTT Mr Suva Crata 450  
D. JDH Lady Dau Manso  
D. JDH Lady Landau Manso 535/3

**S. JDH Modelo Manso 268/5 (Imp)**

S. FBC Megatron Manso 345/1  
D. FBC D Miss Jewel De Manso

**Dam: PALMAL GABRIELLA 6807**

**S. JDH Sir Paul Manso (Imp)**  
D. Lancefield D Gabriella 5475/D  
D. Lancefield D Gabriella 4242/D



200 DAY WT.	400 DAY WT.	600 DAY WT.	CARCASE WT.	EMA SQCM	RBY %	JAP OX INDEX	LIVE EXPORT INDEX
+31 62%	+38 59%	+53 56%	+33 48%	+3.5 38%	+1.0 29%	\$+23	\$+18

**Notes:** This is our first son of JDH Sir Hudson to be offered & comes from a strong damline as well. Hudson sons sold up to \$72,500 last year. Houston is a high weight performance bull through his excellent growth for age, length & attractive volume of natural muscling. Good in the testicles & temperament, big ribspring, good sheath & optimum softness in his finish. He's a big, beef performance bull with a high recommendation at the auctioneer's first call of the Sale.

**Dam** 1st calf; **Granddam** 4 calves inc. 1 natural.

\$

## LOT 2 PALMAL PROSPECT 8161

H.B. DJM8161M(REG) Calved: 08.02.17 (32 mths) Colour: Grey

S. JDH Sir Lawford Manso  
**S. JDH Sir Paul Manso (Imp)**  
D. JDH Lady Britton Manso

**Sire: LANCEFIELD D PRIMUS 4929/D**

S. Lancefield D Doremus 559/D  
D. Lancefield D Cheeky 2469/D  
D. Lancefield D Cheeky 66/D  
S. Lancefield D Doncaster 2771/D (Sc)  
S. Lancefield D Denzil 4188/D (P)  
D. Lancefield D Claudette 2482/D

**Dam: PALMAL MINETTE 5861**

S. Lancefield D Augustus 3115/D (Sc)  
D. Lancefield D Minette 4251/D  
D. Lancefield D Minette 490/D



200 DAY WT.	400 DAY WT.	600 DAY WT.	CARCASE WT.	EMA SQCM	RBY %	JAP OX INDEX	LIVE EXPORT INDEX
+36 68%	+44 72%	+71 65%	+39 54%	+3.7 31%	+1.0 28%	\$+35	\$+29

**Dam** 4 calves @ 402 dci. **Granddam** 4 calves @ 394 dci.

\$

## LOT 3 PALMAL MARVEL 8525

H.B. DJM8525M(REG) Calved: 16.08.17 (26 mths) Colour: Grey

S. JDH Sir Lawford Manso  
**S. JDH Mr Elmo Manso (Imp)**  
D. JDH Lady Ellis Manso 178/2

**Sire: NCC MARZIPAN**

**S. JDH Sir Marri Manso (Imp)**  
D. Brahrock Miss Marri Anna 3839  
D. Brahrock Anna-Bella 2781  
S. El Ja J Presedintial DP Manso  
S. Jaffra Entry 4316  
D. Jaffra Naoemi 3835

**Dam: JAFFRA 4854**

S. Jaffra Quinton (P)  
D. Jaffra 4306  
D. Jaffra 3863



200 DAY WT.	400 DAY WT.	600 DAY WT.	CARCASE WT.	EMA SQCM	RBY %	JAP OX INDEX	LIVE EXPORT INDEX
+34 55%	+45 50%	+59 48%	+34 41%	+3.7 32%	+1.0 25%	\$+27	\$+22

**Notes:** What a Marvel this Elmo grandson is. An imposing, big sire type – long, strong and proud. Good strong head on him backed up by ideal pigment. It's impressive the way he comes off a lovely topline into a huge spring of rib. We sold a son of NCC Marzipan at last year's Sale for \$32,500; here's another good one. Dam was purchased at the Jaffra Stud Dispersal.

\$

## LOT 4 PALMAL DYNAMO 8327

H.B. DJM8327M(REG) Calved: 14.09.17 (25 mths) Colour: Grey

S. JDH Sir Lawford Manso

**S. JDH Mr Elmo Manso (Imp)**

D. JDH Lady Ellis Manso 178/2

**Sire: NCC LORD DELAWARE**

**S. JDH Datapack Manso (Imp)**

D. El Ja Lady Dianna Manso  
D. El Ja Silhouette Manso  
S. JDH Sir Lawford Manso

**S. JDH Sir Paul Manso (Imp)**

D. JDH Lady Britton Manso

**Dam: LANCEFIELD D ESTELLE 5467/D**

S. Lancefield Duke Manso 2168  
D. Lancefield D Estelle 4062/D  
D. Lancefield D Estelle Manso 2069/D



200 DAY WT.	400 DAY WT.	600 DAY WT.	CARCASE WT.	EMA SQCM	RBY %	JAP OX INDEX	LIVE EXPORT INDEX
+22 63%	+30 61%	+32 60%	+23 51%	+3.1 39%	+0.9 32%	\$+17	\$+14

**Notes:** Dynamo is 2019's first NCC Delaware Sale son – this sire continues to breed consistent top quality in his sons & daughters. He is a ginger red, showing a bit of old Elmo, but all grey bred. Studmasters, you'll appreciate this high quality sire prospect's heavy bone, powerful muscling, outstanding hindquarter, excellent nature & terrific topline. A genuine robustness to this sire & great skin on him as well. His full brother sold at last year's Sale for \$37,500 & a half-brother is the \$50,000 Dimension. His damline is a proven donor beauty, with a perfect udder at 8yo & on the top shelf of our Stud's producers.

**Dam** 25 calves ET & IVF & 5 natural; **Granddam** 10 calves ET and 3 natural.

\$

## NO LOTS 5 & 6

A/c Elrose Stud, Brigalow, Theodore.

## LOT 7 ELROSE DOMINION 16718

H.B. ELR16718M(REG) Calved: 02.10.17 (24 mths) Colour: Grey

S. Elrose Significance

S. Elrose Dominance

D. Elrose Lady Avonn 3838

**Sire: ELROSE DOMINIC 11537**

S. PBF Loxton Manso 125/7  
D. Elrose Missy 8204  
D. Elrose Missy 5722

**S. JDH Karu Manso 800 (Imp)**

S. Yenda V 49/5

D. Yenda Miss Cameo 168/0

**Dam: ELROSE MISS SLOGAN 11362**

S. Tartrus Custom Made 3164  
D. Elrose Miss Slogan 3651  
D. Elrose Miss Slogan 1268



200 DAY WT.	400 DAY WT.	600 DAY WT.	CARCASE WT.	EMA SQCM	RBY %	JAP OX INDEX	LIVE EXPORT INDEX
+33 67%	+47 71%	+56 72%	+33 57%	+2.2 43%	+1.2 34%	\$+42	\$+38

**Dam** 1st calf.

\$

## LOT 8 ELROSE BUCANEER 16176

H.B. ELR16176M(REG) Calved: 10.10.17 (24 mths) Colour: Grey

S. JDH Sir Lawford Manso

**S. JDH Mr Elmo Manso (Imp)**

D. JDH Lady Ellis Manso 178/2

**Sire: NCC BUCHANAN**

S. Brahrock Avenue 3190  
D. NCC Bernadette 1579  
D. Leany Vale Casey 627  
S. PBF Safin Manso 29/7  
S. Elrose Marit  
D. Elrose Cilla 5720

**Dam: ELROSE 12732**

S. PBF Safin Manso 29/7  
D. Elrose 8783  
D. Elrose Hezawink



200 DAY WT.	400 DAY WT.	600 DAY WT.	CARCASE WT.	EMA SQCM	RBY %	JAP OX INDEX	LIVE EXPORT INDEX
+42 66%	+62 64%	+95 73%	+47 55%	+4.1 41%	+1.3 31%	\$+55	\$+48

**Dam** 1st calf; **Granddam** 5 calves in 6 years.

\$

## LOT 9 ELROSE HARRY 17016 (POLL)

H.B. ELR17016M(REG) Calved: 20.09.17 (25 mths) Colour: Grey

S. Lancefield A Hercules 1723  
S. Lancefield A 3538M  
D. Lancefield A Brancha 1927

**Sire: ELROSE HARRISON**

S. Willtony Internett (P)  
D. Elrose 3930  
D. Elrose Lisa 3rd (P)  
S. Lancefield Mason Manso 7167  
S. Lancefield Moreton 1766 (P)  
D. Lancefield Cherie 8353

**Dam: ELROSE 10525 (P)**

S. Willtony Internett (P)  
D. Elrose 3486 (P)  
D. Elrose 2265



200 DAY WT.	400 DAY WT.	600 DAY WT.	CARCASE WT.	EMA SQCM	RBV %	JAP OX INDEX	LIVE EXPORT INDEX
+36 67%	+52 65%	+80 72%	+35 56%	+6.1 42%	+1.6 33%	\$+60	\$+55

**Notes:** Carcass values galore & high weight performance in this powerful bodied poll bull. Broad backed & carrying abundant natural muscle expression. Harry looks a ready made superior producer for the bull breeding paddock. He backs his strong beef traits with excellent breed character & hump setting as well as a strong masculine head. A lot of real grunt here for poll production.

**Dam** 1st calf.

\$

## LOT 10 ELROSE SPENCER 15925 (SCURRS)

H.B. ELR15925M(REG) Calved: 14.09.17 (25 mths) Colour: Grey

S. Elrose Significance  
S. Elrose Spectacle  
D. Elrose 5429  
**Sire: ELROSE SPECTACULAR 10520 (P)**  
S. Lancefield Moreton 1766 (P)  
D. Elrose 6178 (P)

D. Elrose 3486 (P)  
S. Elrose Significance  
S. Elrose Secombe  
D. PBF Chandler Mary Manso

**Dam: ELROSE RACHEL 12381**

S. PBF Rockaby Manso 466/5  
D. Elrose Rachel 7851  
D. Elrose Rachel 5282



200 DAY WT.	400 DAY WT.	600 DAY WT.	CARCASE WT.	EMA SQCM	RBV %	JAP OX INDEX	LIVE EXPORT INDEX
+28 71%	+37 75%	+51 77%	+35 60%	+2.0 46%	+0.6 35%	\$+15	\$+10

**Notes:** Spencer is a soft blue grey bull of good pigment. He lays the muscle down nice and evenly and again has a good strong head.

**Dam** 1st calf.

\$

## LOT 11 ELROSE ABLE 16705

H.B. ELR16705M(REG) Calved: 02.10.17 (24 mths) Colour: Grey

S. JDH Woodson De Manso  
**S. JDH Clanton De Manso 313/8 (Imp)**  
D. JDH Ms Amos Manso 495

**Sire: CAMBIL APOLLO MANSO 4687**

**S. JDH Sir Tobe Manso (Imp)**  
D. Cambil Latoya 3490  
D. Warraka Latoya 2128  
S. Lancefield M Billionaire Manso 1377/M  
S. Elrose Rich Didor  
D. Elrose Miss Didor 5036

**Dam: ELROSE JANCEY 11955**

S. PBF McCulloch Manso  
D. Elrose Jancey 6954  
D. Elrose Jancey 5436



200 DAY WT.	400 DAY WT.	600 DAY WT.	CARCASE WT.	EMA SQCM	RBV %	JAP OX INDEX	LIVE EXPORT INDEX
+42 65%	+66 69%	+81 73%	+52 55%	+2.7 39%	+1.1 30%	\$+42	\$+34

**Notes:** Here is a good type of son of Cambil Apollo exhibiting plenty of length, strong muscling and an excellent hindquarter. Valuable blend of high performance bloodlines through his pedigree lines, backed up by his EBV's.

**Dam** 1st calf.

\$

## LOT 12 ELROSE DEPUTY 16282

H.B. ELR16282M(REG) Calved: 04.10.17 (24 mths) Colour: Grey

S. NCC Sugarwood  
S. Carinya Kirkwood  
D. Carinya Miami

**Sire: NCC MARSHALL**

**S. JDH Sir Marri Manso (Imp)**  
D. Brahrock Marri Empress 3742  
D. Brahrock Miss Empress 1412  
S. Lancefield M Billionaire Manso 1377/M  
S. Elrose All Class 8486  
D. Elrose Springtime 3994

**Dam: ELROSE 11180**

S. FBC D Major De Manso  
D. Elrose 6304  
D. Elrose 3727



200 DAY WT.	400 DAY WT.	600 DAY WT.	CARCASE WT.	EMA SQCM	RBV %	JAP OX INDEX	LIVE EXPORT INDEX
+34 67%	+49 66%	+66 75%	+36 57%	+4.1 43%	+1.5 31%	\$+34	\$+27

**Notes:** Deputy is a big, dark grey, real sire type son of our \$52,500 purchase, NCC Marshall. Broad headed & full muzzled, he's a well balanced, free moving bull that stands square & sound on good feet & legs. Length & strength of carcass credentials are features of his make-up & he carries a good set of testicles. For masculinity, pigment & beef performance, seek him out early in the Sale.

**Dam** 2 calves @ 340 dci.

\$

## LOT 13 ELROSE LARRY 16480

H.B. ELR16480M(REG) Calved: 10.10.17 (24 mths) Colour: Grey

**S. JDH Leberation 79/1 (Imp)**  
S. Lancefield D Laurette 2393/D  
D. Lancefield D Emma 1224/D

**Sire: ELROSE LARIAT 11874**

S. Lancefield Signature 9153  
D. Elrose Mandy 4469  
D. Elrose Mandy 2640  
S. Elrose Significance  
S. Elrose Secombe  
D. PBF Chandler Mary Manso

**Dam: ELROSE DENNY 12501**

S. PBF McCulloch Manso  
D. Elrose Denny 8747  
D. Elrose Denny 3323



200 DAY WT.	400 DAY WT.	600 DAY WT.	CARCASE WT.	EMA SQCM	RBV %	JAP OX INDEX	LIVE EXPORT INDEX
+34 67%	+48 66%	+73 76%	+39 58%	+4.6 44%	+1.6 35%	\$+52	\$+47

**Dam** 1st calf.

\$

A/c Lancefield Stud, Lancefield, Dululu.

## LOT 14 LANCEFIELD S 448

(Herd Bull) Calved: 28.08.17 (26 mths) Colour: Grey

**Sire: LANCEFIELD S PRINCE WILLIE 4671/1**

**Dam: LANCEFIELD PUREBRED BRAHMAN COW**

**Notes:** This very impressive commercial herd bull presents his beef credentials from every way you look at him. A big volume bull, strong and sound on good feet and legs, that walks out well and will cover the country. Heavy muscling, great length, beautiful hindquarter all coupled with excellent pigment, strong head, character and style. Good testicles on him.

\$

**LOT 15 LANCEFIELD S DAN-MURPHY 5746/1**

H.B. LAS5746/1M(REG) Calved: 21.11.17 (23 mths) Colour: Grey

S. Lancefield S Kingston 3644/1 (P)  
 S. Lancefield S Kedron 4344/1 (P)  
 D. Lancefield Abergail 3246

**Sire: LANCEFIELD S TALLADEGA 5282/1 (P)**

**S. JDH Sir Reno Manso (Imp)**  
 D. Lancefield S Kathryn 4283/1  
 D. Lancefield Kathryn 2445  
 S. Lancefield S Kansas 3921/1 (Sc)  
 S. Lancefield S Durack 4569/1 (P)  
 D. Lancefield S Olive 3591

**Dam: LANCEFIELD S MISS MURPHY 5765/1**

**S. JDH Sir Reno Manso (Imp)**  
 D. Lancefield S Amelia 4754/1  
 D. Lancefield D Amelia 2640 (P)



200 DAY WT.	400 DAY WT.	600 DAY WT.	CARCASE WT.	EMA SQCM	RBV %	JAP OX INDEX	LIVE EXPORT INDEX
+34 65%	+43 63%	+75 73%	+36 53%	+4.3 36%	+0.9 27%	\$+35	\$+29

**Notes:** Dan-Murphy is an attractive dark grey with the look of a Sire. Strong boned, square bodied, heavy hindquarterd & exhibiting attractive breed character. Studmasters, pay him some attention early in the Sale. He's a half-brother to the impressive Mr Murphy, sold for \$45,000 to Stanbroke Pastoral Co. at last year's Sale, so his dam has established herself as a superior producer in the Stud.  
**Dam** 3 calves @ 357 dci. **Granddam** 16 calves inc. 8 natural.

S

**LOT 16 LANCEFIELD S GLENROY 5646/1 (SCURRS)**

H.B. LAS5646/1M(REG) Calved: 09.05.17 (29 mths) Colour: Grey

S. Lancefield Kinsman Manso 8950  
 S. Lancefield S Kirby 3907/1 (P)  
 D. Lancefield Brancha 9263 (P)

**Sire: LANCEFIELD S KARUMBA 4684/1 (P)**

S. Lancefield Bernardo 1218  
 D. Lancefield S Brancha 3074/1  
 D. Lancefield Miss Hima 9729

**S. JDH Baxter Manso 33/1 (Imp)**  
 S. Lancefield Buster Manso 3253  
 D. Lancefield Mary Lou Manso 1897

**Dam: LANCEFIELD S MERYL 4797/1**

**S. JDH Sir Reno Manso (Imp)**  
 D. Lancefield S Meryl 3612  
 D. Lancefield Meryl 2534



200 DAY WT.	400 DAY WT.	600 DAY WT.	CARCASE WT.	EMA SQCM	RBV %	JAP OX INDEX	LIVE EXPORT INDEX
+31 66%	+51 70%	+59 63%	+35 53%	+4.0 42%	+0.8 31%	\$+36	\$+32

**Notes:** The Meryl bloodlines always deliver the best of beef performance in natural easy doing packages, just like Glenroy. He's a big white grey of strong breed type, extra length & a big butt end. Good head & hump setting, he's just a great representative of line after line of proven Lancefield genetics.  
**Dam** 3 calves @ 481 dci. **Granddam** 8 calves @ 396 dci.

S

**LOT 17 LANCEFIELD S DALTON 5743/1 (SCURRS)**

H.B. LAS5743/1M(REG) Calved: 08.10.17 (24 mths) Colour: Grey

**S. JDH Baxter Manso 33/1 (Imp)**  
 S. Lancefield Buster Manso 3253  
 D. Lancefield Mary Lou Manso 1897

**Sire: LANCEFIELD S JAKE MANO 4710/1**

**S. JDH Mr Echo Manso (Imp)**  
 D. Lancefield S Meggie Manso 4271/1  
 D. Lancefield S Baroness Manso 3655  
 S. Lancefield Kalahari Manso 9125  
 S. Lancefield S Kansas 3921/1 (Sc)  
 D. Lancefield Amelia 8847 (P)

**Dam: LANCEFIELD S OLIVE 4919/1**

S. Lancefield Madigan Manso 1845  
 D. Lancefield S Olive 3591  
 D. Lancefield Olive 2760



200 DAY WT.	400 DAY WT.	600 DAY WT.	CARCASE WT.	EMA SQCM	RBV %	JAP OX INDEX	LIVE EXPORT INDEX
+27 67%	+38 66%	+55 73%	+35 55%	+2.0 45%	+0.5 32%	\$+32	\$+27

**Notes:** A son of the beautifully bred Jake, this 2yo bull is similar to his mate & may just shade him on some attributes – you be the judge. A white grey of excellent breed style, growth, depth, thickness & softness. A big deep flank on this very correct bull. If you're wanting weight performance & sire style plus, latch on to Dalton.  
**Dam** 4 calves @ 433 dci. **Granddam** 6 calves @ 392 dci. **Great Granddam** 7 calves @ 426 dci.

S

**LOT 18 LANCEFIELD S RYAN 5751/1 (POLL)**

H.B. LAS5751/1M(REG) Calved: 24.10.17 (24 mths) Colour: Grey

S. Lancefield S Kingston 3644/1 (P)  
 S. Lancefield S Kedron 4344/1 (P)  
 D. Lancefield Abergail 3246

**Sire: LANCEFIELD S TALLADEGA 5282/1 (P)**

**S. JDH Sir Reno Manso (Imp)**  
 D. Lancefield S Kathryn 4283/1  
 D. Lancefield Kathryn 2445  
 S. Lancefield Significant 9159  
 S. Lancefield Saxby 3176  
 D. Lancefield Matilda 7353

**Dam: LANCEFIELD S SHOW BRANCHA 4701/1**

S. Lancefield Equalizer 4669  
 D. Lancefield Show Brancha 8463 (P)  
 D. Lancefield Show Brancha 3240 (P)



200 DAY WT.	400 DAY WT.	600 DAY WT.	CARCASE WT.	EMA SQCM	RBV %	JAP OX INDEX	LIVE EXPORT INDEX
+24 66%	+34 63%	+46 73%	+27 54%	+3.8 37%	+1.2 29%	\$+24	\$+21

**Notes:** Ryan is a poll prospect, just 2yo. An upstanding type, soft blue grey, excellent body – big square and deep.

**Dam** 5 calves @ 448 dci. **Granddam** 12 calves @ 432 dci.

S

**LOT 19 LANCEFIELD S STRATHMORE 5745/1**

H.B. LAS5745/1M(REG) Calved: 08.10.17 (24 mths) Colour: Grey

S. Lancefield S Kingston 3644/1 (P)  
 S. Lancefield S Kedron 4344/1 (P)  
 D. Lancefield Abergail 3246

**Sire: LANCEFIELD S TALLADEGA 5282/1 (P)**

**S. JDH Sir Reno Manso (Imp)**  
 D. Lancefield S Kathryn 4283/1  
 D. Lancefield Kathryn 2445

**S. JDH Mr Echo Manso (Imp)**  
 S. Lancefield Elgin Manso 3875/1  
 D. Lancefield Meryl Lyn Manso 3403

**Dam: LANCEFIELD S EVE 4973/1**

**S. JDH Sir Reno Manso (Imp)**  
 D. Lancefield S Eve 4533/1  
 D. Lancefield S Eve 3702



200 DAY WT.	400 DAY WT.	600 DAY WT.	CARCASE WT.	EMA SQCM	RBV %	JAP OX INDEX	LIVE EXPORT INDEX
+27 68%	+28 67%	+37 74%	+30 57%	+3.8 45%	+1.2 33%	\$+26	\$+23

**Notes:** A thick, strong muscled, strong headed bull. Has a great ribspring off a big broad topline. Leading beef breeders will recognise his potential to increase paddock returns.

**Dam** 4 calves @ 411 dci. **Granddam** 6 calves @ 469 dci. **Great Granddam** 8 calves @ 464 dci.

S

A/c 2AM Stud, Barwon Park, Dingo.

**LOT 20 2AM RAMADA 6318**

H.B. 2AM6318M(REG) Calved: 07.10.17 (24 mths) Colour: Grey

S. FBC W Jiver De Manso  
 S. Carinya Mario  
 D. Carinya Remona

**Sire: CARINYA RAMBO 5/421**

**S. JDH Riddell Manso (Imp)**  
 D. Carinya Portia  
**D. JDH Lady Trisha Manso (Imp)**  
**S. JDH Sir Paul Manso (Imp)**  
 S. Lancefield D Pattenson 5150/D  
 D. Lancefield Roxy Manso 4273/1

**Dam: 2AM MISS 5084**

S. Lancefield A Mr Adonis Manso 2163  
 D. Lancefield A Miss 3947  
 D. Lancefield A Miss 1539



200 DAY WT.	400 DAY WT.	600 DAY WT.	CARCASE WT.	EMA SQCM	RBV %	JAP OX INDEX	LIVE EXPORT INDEX
+34 62%	+42 55%	+59 53%	+38 44%				

**Notes:** This is a highly impressive, upstanding bull of excellent pigment, breed type and constitution. Lovely depth to him, full through the quarters and you'll appreciate the squareness of his rear end.

**Dam** 2 calves @ 372 dci.

S



**LOT 21 2AM ELON 6434**

H.B. 2AM6434M(REG) Calved: 01.10.17 (24 mths) Colour: Grey

**S. JDH Mr Echo Manso (Imp)**

S. Lancefield A Ecstrata 2303

D. Lancefield A Meryl 1306

**Sire: LANCEFIELD A ELUSIVE 4030M****S. JDH Sir Reno Manso (Imp)**

D. Lancefield A Josephina 1039

D. Lancefield Joesphina 2422

S. Lancefield Buster Manso 3253

S. Lancefield S Bourke 4419/1

D. Lancefield Meryl Lou 3672

**Dam: 2AM LADY MARION 4458**

S. Lancefield Karratha 2514

D. Lancefield A Lady Marion 1719

D. Lancefield A Lady Marion Manso 1006



200 DAY WT.	400 DAY WT.	600 DAY WT.	CARCASE WT.	EMA SQCM	RBY %	JAP OX INDEX	LIVE EXPORT INDEX
+34 66%	+45 62%	+62 62%	+41 51%	+4.2 35%	+1.2 30%	\$+33	\$+28

**Notes:** Elon is a quiet natured bull of outstanding natural muscle expression and softness of finish. Look at his depth through the flank.**Dam** 4 calves @ 366 dci. **Granddam** a donor of 35 calves inc. 8 natural.

\$

**LOT 22 2AM SALVADOR 6252**

H.B. 2AM6252M(REG) Calved: 17.08.17 (26 mths) Colour: Grey

**S. JDH Sir Lawford Manso**

S. JDH Mr Elmo Manso

D. JDH Lady Ellis Manso 178/2

**Sire: JDH SIR STRATTON MANSO 823/4 (IMP)**

S. JDH Madison De Manso

D. JDH Lady Sandy Manso

D. JDH Lady Earline Manso

S. Lancefield Karratha 2514

S. Lancefield A Preston 2584M

D. Lancefield A Brazilia 1521

**Dam: 2AM EMERALD 5187 (P)**

S. Lancefield A Havelock 1052

D. Lancefield A Emerald 2752 (P)

D. Lancefield A Emerald 1188 (P)



200 DAY WT.	400 DAY WT.	600 DAY WT.	CARCASE WT.	EMA SQCM	RBY %	JAP OX INDEX	LIVE EXPORT INDEX
+26 59%	+39 58%	+52 57%	+29 48%	+2.7 38%	+0.8 29%	\$+31	\$+26

**Notes:** Salvador is an eye catching, strong pigment, dark blue bull of attractive carcass qualities. A son of the highly successful JDH Sir Stratton, he is square & full bodied, has good disposition, good sheath & has the width you want behind the hump. Looks a promising prospect, backed up by good EBV's.**Dam** a donor; **Granddam** 5 calves @ 378 dci.

\$

**LOT 23 2AM EMPEROR 6489**

H.B. 2AM6489M(REG) Calved: 02.11.17 (23 mths) Colour: Grey

**S. JDH Mr Echo Manso (Imp)**

S. Lancefield A Ecstrata 2303

D. Lancefield A Meryl 1306

**Sire: LANCEFIELD A ELUSIVE 4030M****S. JDH Sir Reno Manso (Imp)**

D. Lancefield A Josephina 1039

D. Lancefield Joesphina 2422

**S. JDH Sir Reno Manso (Imp)**

S. Lancefield A Sir Rivoli Manso

D. Lancefield Mariah Manso 1383

**Dam: LANCEFIELD A MISS STANLEY 3135****S. JDH Rick Manso (Imp)**

D. Lancefield A Miss Stanley 1526

D. Lancefield A Miss Stanley 561



200 DAY WT.	400 DAY WT.	600 DAY WT.	CARCASE WT.	EMA SQCM	RBY %	JAP OX INDEX	LIVE EXPORT INDEX
+32 67%	+40 63%	+52 63%	+35 52%	+4.5 34%	+1.1 31%	\$+16	\$+11

**Notes:** If you're looking for natural thickness and weight performance then you'll appreciate the muscle pattern, big square hindquarter and easy finishing ability of Emperor. Has the skin and coat type required, and a strong masculine head.**Dam** 7 calves @ 374 dci. **Granddam** 11 calves @ 373 dci.

\$

**LOT 24 2AM DOMINATOR 6242**

H.B. 2AM6242M(REG) Calved: 15.08.17 (26 mths) Colour: Grey

**S. JDH Mr Woodman Manso****S. JDH Woodson De Manso (Imp)**

D. JDH Lady Irma Manso

**Sire: JDH DOMINO MANSO 200/8 (IMP)**

S. JDH Remington Manso 784/2

D. JDH Lady Rosaura Manso

D. JDH Ann Arbor Manso

**S. JDH Mr Echo Manso (Imp)**

S. Lancefield A Ecstrata 2303

D. Lancefield A Meryl 1306

**Dam: 2AM MARIAH LOU MANSO 5002**

S. Lancefield Buster Manso 3253

D. Lancefield A Mariah Lou Manso 283

D. Lancefield A Mariah Lou Manso 1062



200 DAY WT.	400 DAY WT.	600 DAY WT.	CARCASE WT.	EMA SQCM	RBY %	JAP OX INDEX	LIVE EXPORT INDEX
+22 58%	+30 57%	+38 55%	+29 48%	+2.6 39%	+0.5 31%	\$+17	\$+13

**Notes:** Body & beef are the features of this son of JDH Domino. Puts it all together well in a package of optimum growth, excellent spring of rib, ample length & desirable smooth finish. Good set of testicles on him. Echo, Buster & Meryl bloodlines underwrite the genetic strength of his damline.**Dam** a donor of 4 calves inc. 2 natural; **Granddam** 6 calves @ 379 dci.

\$

**LOT 25 2AM EMINENCE 6466**

H.B. 2AM6466M(REG) Calved: 06.11.17 (23 mths) Colour: Grey

**S. JDH Mr Echo Manso (Imp)**

S. Lancefield A Ecstrata 2303

D. Lancefield A Meryl 1306

**Sire: LANCEFIELD A ELUSIVE 4030M****S. JDH Sir Reno Manso (Imp)**

D. Lancefield A Josephina 1039

D. Lancefield Joesphina 2422

S. Lancefield Karratha 2514

S. Lancefield A Hercules 1723

D. Lancefield A Lady Marion Manso 1006

**Dam: LANCEFIELD A DRIFTER 3912**

S. Lancefield Marshall Manso 8602

D. Lancefield A Drifter 1919

D. Lancefield Drifter 3111



200 DAY WT.	400 DAY WT.	600 DAY WT.	CARCASE WT.	EMA SQCM	RBY %	JAP OX INDEX	LIVE EXPORT INDEX
+30 67%	+37 63%	+47 63%	+33 52%	+2.9 37%	+1.0 31%	\$+14	\$+10

**Notes:** Eminence is not yet 2yo however he's a heavyweight, white grey bull of lovely depth and strong muscle expression.**Dam** a donor of 11 calves inc. 5 natural.

\$

**LOT 26 2AM CADMAN 6559**

H.B. 2AM6559M(REG) Calved: 21.11.17 (23 mths) Colour: Grey

**S. BNA Double Take Manso (Imp)**

S. Lancefield A Colossimo 1206 (P)

D. Lancefield Maisey 8346 (P)

**Sire: LANCEFIELD A CAMPAIGN 3805M (SC)****S. JDH Sir Reno Manso (Imp)**

D. Lancefield A Meryl Manso 1354

D. Lancefield Meryl Manso 9208

**S. JDH Mr Echo Manso (Imp)**

S. Lancefield A Ecstasy Manso 2187

D. Lancefield A Mariah Manso 1065

**Dam: LANCEFIELD A ANASTASIA 3560**

S. Lancefield A Jet Power 437

D. Lancefield A Anastasia 1883

D. Lancefield Anastasia 9709



200 DAY WT.	400 DAY WT.	600 DAY WT.	CARCASE WT.	EMA SQCM	RBY %	JAP OX INDEX	LIVE EXPORT INDEX
+30 64%	+40 59%	+53 57%	+33 49%	+3.5 32%	+0.9 29%	\$+17	\$+12

**Notes:** Make certain you highlight this bull to inspect. Cadman is a very stylish, high quality, white grey bull. Long bodied and strong muscled, he has a real presence, eye catching breed character and sire appeal. Lovely strong head at one end, a beautiful butt end at the other, and all good in between. Don't miss him.**Dam** 6 calves @ 369 dci. **Granddam** 8 calves @ 390 dci.

\$

## LOT 27 2AM RAMONE 6316 (POLL)

H.B. 2AM6316M(REG) Calved: 14.10.17 (24 mths) Colour: Grey

S. FBC W Jiver De Manso  
S. Carinya Mario

D. Carinya Remona

**Sire: CARINYA RAMBO 5/421**

**S. JDH Riddell Manso (Imp)**

D. Carinya Portia

**D. JDH Lady Trisha Manso (Imp)**

S. Lancefield A Colossimo 1206 (P)

S. Lancefield A Colossal 4125M (P)

D. Lancefield A Lady Renee 2598

**Dam: 2AM MELINA 5160 (P)**

S. Lancefield A Rick Manso 1512

D. Lancefield A Melina 4216

D. Lancefield A Melina 3079



200 DAY WT.	400 DAY WT.	600 DAY WT.	CARCASE WT.	EMA SQCM	RBY %	JAP OX INDEX	LIVE EXPORT INDEX
+25 63%	+32 56%	+48 54%	+31 44%	+ - %	+ %	\$+24	\$+20

**Notes:** Ramone is a poll bull that is long bodied and soft finished, showing very desirable carcass values.

**Dam** 2 calves @ 357 dci. **Granddam** 5 calves @ 355 dci.

\$

A/c Elrose Stud, Brigalow, Theodore.

## LOT 28 ELROSE ERNEST 16313 (POLL)

H.B. ELR16313M(REG) Calved: 15.10.17 (24 mths) Colour: Grey

S. Sugarlands Esto 225 (P)

**S. JME Mr Esto 28 (Imp) (P)**

D. JME Lady Rolex Emperor 192/2

**Sire: CLUKAN ESTO POWER 223/1 (P)**

**S. Mr International 50/1 (Imp)**

D. Clukan Edwina 073

D. Clukan Crystal 038

**S. Mr V8 189/4 (Imp)**

S. Elrose Dividend

D. Elrose Desire

**Dam: ELROSE NEOMI 6428 (P)**

S. Willtony Internett (P)

D. Elrose Neomi 3484 (P)

D. Elrose Neomi 54th



200 DAY WT.	400 DAY WT.	600 DAY WT.	CARCASE WT.	EMA SQCM	RBY %	JAP OX INDEX	LIVE EXPORT INDEX
+23 64%	+31 63%	+45 63%	+24 53%	+4.4 40%	+1.5 32%	\$+36	\$+32

**Notes:** An attractive, white grey bull with the poll bonus. Ernest displays industry desirable carcass qualities to optimum effect. Naturally well muscled and impressive, big broad loin and topline. Strong successful bloodlines top and bottom side of his pedigree, from our Neomi cowline which has bred with consistency and success for decades.

**Dam** 6 calves in 7 years; **Granddam** Days to Calving EBV -2.1.

\$

## LOT 29 ELROSE 16568

(Herd Bull) Calved: 23.07.17 (27 mths) Colour: Grey

**Sire: ELROSE LUCAS 8856**

**Dam: ELROSE PUREBRED BRAHMAN COW**



200 DAY WT.	400 DAY WT.	600 DAY WT.	CARCASE WT.	EMA SQCM	RBY %	JAP OX INDEX	LIVE EXPORT INDEX
+17 58%	+25 65%	+36 58%	+21 46%	+3.3 33%	+0.6 26%	\$+17	\$+15

**Notes:** An attractive, smart bull with excellent Brahman breed character. His length, broad topline, full hindquarter and volume through the body equips him well to deliver optimum beef performance in his progeny. A high class, commercial sire strongly credentialled for the inspection of quality steer breeders.

\$

## LOT 30 ELROSE BOUNTY 16190

H.B. ELR16190M(REG) Calved: 12.10.17 (24 mths) Colour: Grey

S. JDH Sir Lawford Manso

**S. JDH Mr Elmo Manso (Imp)**

D. JDH Lady Ellis Manso 178/2

**Sire: NCC BUCHANAN**

S. Brahrock Avenue 3190

D. NCC Bernadette 1579

D. Leany Vale Casey 627

S. Elrose Significance

S. Elrose Spectacle

D. Elrose 5429

**Dam: ELROSE 12142**

**S. SMG Monumental (Imp)**

D. Elrose 7555

D. Elrose 5028



200 DAY WT.	400 DAY WT.	600 DAY WT.	CARCASE WT.	EMA SQCM	RBY %	JAP OX INDEX	LIVE EXPORT INDEX
+33 66%	+58 70%	+65 73%	+40 56%	+3.6 42%	+1.1 32%	\$+37	\$+30

**Dam** 1st calf.

\$

## LOT 31 ELROSE 16721

(Herd Bull)

Age: 24 mths

Colour: Grey

**Sire: ELROSE DOMINIC 11537**

**Dam: ELROSE LADY LUCK**

**Notes:** A long, upstanding bull of excellent beef and breed type. Naturally easy doing.

**Dam** 2 calves @ 358 dci.

\$

## LOT 32 ELROSE BONUS 15895

H.B. ELR15895M(REG) Calved: 27.09.17 (25 mths) Colour: Grey

**S. Mr V8 464/4 (Imp)**

S. Carinya Boston

D. Carinya Miss Amanda

**Sire: ELROSE 11904**

S. Lancefield Signature 9153

D. Elrose Neomi 4881 (Sc)

D. Elrose Neomi 6th

S. Elrose Dominance

S. Elrose Invincible

D. Elrose 5394

**Dam: ELROSE 12280**

S. Yenda V 49/5

D. Elrose 9416

D. Elrose 7353



200 DAY WT.	400 DAY WT.	600 DAY WT.	CARCASE WT.	EMA SQCM	RBY %	JAP OX INDEX	LIVE EXPORT INDEX
+29 68%	+42 73%	+57 76%	+30 58%	+5.9 43%	+1.4 34%	\$+36	\$+31

**Dam** 1st calf.

\$

**LOT 33 ELROSE CHART TOPPER 16179**

H.B. ELR16179M(REG) Calved: 05.10.17 (24 mths) Colour: Grey

**S. JDH Rick Manso (Imp)**

S. Lancefield A Ratio 1820

D. Lancefield A Venus 992 (Sc)

**Sire: ELROSE TOP RATE 10393**

S. Elrose Autograph

D. Elrose 7910

D. Elrose 2992

S. Lancefield M Billionaire Manso 1377/M

S. Elrose Gold Bullion

D. PBF Nellie's Girl Manso 449/5

**Dam: ELROSE 11781**

S. Elrose Dividend

D. Elrose 6431

D. Elrose 4073



200 DAY WT.	400 DAY WT.	600 DAY WT.	CARCASE WT.	EMA SQCM	RBV %	JAP OX INDEX	LIVE EXPORT INDEX
+22 69%	+25 73%	+36 75%	+28 59%	+2.3 46%	+0.6 35%	\$+11	\$+5

**Dam** 3 calves @ 348 dci.

\$

A/c Lancefield Stud, Lancefield, Dululu.

**LOT 34 LANCEFIELD S TELSON 5684/1**

H.B. LAS5684/1M(REG) Calved: 06.09.17 (25 mths) Colour: Grey

S. TTT Mr Suva Crata 450

S. JDH Datapack Manso

D. JDH Lady Mil Manso

**Sire: JDH SIR PARKER MANSO (IMP)**

S. JDH Mr Manso 209/9

D. JDH Lady Ramba Manso

D. JDH Lady Lins Manso

S. Lancefield Kinsman Manso 8950

S. Lancefield S Kirby 3907/1 (P)

D. Lancefield Brancha 9263 (P)

**Dam: LANCEFIELD S BRANCHA 5318/1**

S. Lancefield Roper Manso 3471

D. Lancefield S Brancha 4409/1

D. Lancefield S Brancha 3632



200 DAY WT.	400 DAY WT.	600 DAY WT.	CARCASE WT.	EMA SQCM	RBV %	JAP OX INDEX	LIVE EXPORT INDEX
+26 67%	+33 65%	+41 71%	+29 56%	+3.5 39%	+0.8 33%	\$+13	\$+9

**Notes:** You'll like Telson's length and squareness, lovely broad and deep hindquarter, and excellent testicles. A lot of skin on him to develop even further.**Dam** 1st calf; **Granddam** 8 calves @ 367 dci.

\$

**LOT 35 LANCEFIELD S SUTTON 5682/1**

H.B. LAS5682/1M(REG) Calved: 01.09.17 (25 mths) Colour: Grey

S. JDH Sir Liberty Manso 847/5

**S. JDH Mr Echo Manso (Imp)**

D. JDH Maddie Rem Manso 28

**Sire: LANCEFIELD WHISTLER MANSO 4067/1****S. JDH Baxter Manso 33/1 (Imp)**

D. Lancefield Meryl Lyn Manso 3403

D. Lancefield Meryl Manso 9991

**S. JDH Karu Manso 800 (Imp)**

S. Lancefield Karratha 2514

D. Lancefield Meryl 9356

**Dam: LANCEFIELD MARITA 3661****S. JDH Sir Cabell Manso (Imp)**

D. Lancefield Marita 2616

D. Lancefield D Marita 9382



200 DAY WT.	400 DAY WT.	600 DAY WT.	CARCASE WT.	EMA SQCM	RBV %	JAP OX INDEX	LIVE EXPORT INDEX
+36 66%	+45 66%	+70 68%	+40 59%	+6.3 52%	+1.9 38%	\$+42	\$+39

**Notes:** Whistler has produced dozens and dozens of very good bulls for us and Sutton is another of them. A blue grey of attractive softness and strong natural muscle expression. Have a look at his impressive ribeye and width down the topline. Light sheathed and stands up square on good feet and legs.**Dam** 10 calves inc. 6 natural.

\$

**LOT 36 LANCEFIELD S TAMBO 5689/1 (POLL)**

H.B. LAS5689/1M(REG) Calved: 09.10.17 (24 mths) Colour: Grey

S. JDH Mr Woodman Manso

**S. JDH Woodson De Manso (Imp)**

D. JDH Lady Irma Manso

**Sire: JDH DOMINO MANSO 200/8 (IMP)**

S. JDH Remington Manso 784/2

D. JDH Lady Rosaura Manso

D. JDH Ann Arbor Manso

S. Lancefield S Kingston 3644/1 (P)

S. Lancefield S Kedron 4344/1 (P)

D. Lancefield Abergail 3246

**Dam: LANCEFIELD S ABERGAIL 5425/1 (P)**

S. Lancefield Buster Manso 3253

D. Lancefield S Abergail 4490/1

D. Lancefield S Abergail 3957/1



200 DAY WT.	400 DAY WT.	600 DAY WT.	CARCASE WT.	EMA SQCM	RBV %	JAP OX INDEX	LIVE EXPORT INDEX
+21 66%	+29 63%	+31 69%	+26 53%	+1.0 41%	+0.3 31%	\$+7	\$+3

**Notes:** In Tambo you'll find a poll bull of great body shape, heavy muscling, lovely length, and soft and smooth finish. There's meat right down to his hocks. Don't overlook this young bull that carries all the qualities of efficient and superior beef performance.**Dam** 2 calves @ 397 dci. **Granddam** 5 calves @ 394 dci.

\$

**LOT 37 LANCEFIELD S CORY 5712/1**

H.B. LAS5712/1M(REG) Calved: 19.12.17 (22 mths) Colour: Grey

S. JDH Sir Liberty Manso 847/5

**S. JDH Mr Echo Manso (Imp)**

D. JDH Maddie Rem Manso 28

**Sire: LANCEFIELD ELGIN MANSO 3875/1****S. JDH Baxter Manso 33/1 (Imp)**

D. Lancefield Meryl Lyn Manso 3403

D. Lancefield Meryl Manso 9991

S. Lancefield Kalahari Manso 9125

S. Lancefield S Kansas 3921/1 (Sc)

D. Lancefield Amelia 8847 (P)

**Dam: LANCEFIELD S BOOMANA 4589/1**

S. Lancefield Kinsman Manso 8950

D. Lancefield S Boomana 3807/1

D. Lancefield Boomana 7780



200 DAY WT.	400 DAY WT.	600 DAY WT.	CARCASE WT.	EMA SQCM	RBV %	JAP OX INDEX	LIVE EXPORT INDEX
+18 69%	+22 68%	+25 73%	+23 61%	+3.0 55%	+0.9 38%	\$+25	\$+23

**Notes:** Cory is a younger son of our quality consistent sire Elgin. A soft blue grey with obvious excellent carcass performance. His progeny will be high quality and high performance.**Dam** 5 calves.

\$

A/c Lancefield M Stud, Eulogie, Dululu.

**LOT 38 LANCEFIELD M IMAGINE 5937/M**

H.B. LAM5937/MM(REG) Calved: 07.09.17 (25 mths) Colour: Grey

**S. Mr V8 464/4 (Imp)**

S. Carinya Boston

D. Carinya Miss Amanda

**Sire: ELROSE 11455**

S. Lancefield Ambition 7736

D. Elrose Mandy 4th

D. Elrose Mandy 2nd

**S. Mr V8 900/4 (Imp)**

S. Elrose Imagine

D. PBF Sweet Bessie Manso 4

**Dam: ELROSE 11133**

S. Lancefield D Montague 53/D

D. Elrose 3596

D. Elrose 956



200 DAY WT.	400 DAY WT.	600 DAY WT.	CARCASE WT.	EMA SQCM	RBV %	JAP OX INDEX	LIVE EXPORT INDEX
+29 61%	+40 58%	+55 60%	+36 48%	+2.5 39%	+1.0 29%	\$+29	\$+26

**Notes:** Imagine leads our team. He's an easy doing bull of attractive softness and strong bone.**Dam** 3 calves @ 387 dci.

\$

**LOT 39 LANCEFIELD M BRIXTON 6122/M**

H.B. LAM6122/MM(REG) Calved: 14.09.17 (25 mths) Colour: Grey

S. Lancefield M Billionaire Manso 1377/M  
 S. Lancefield M Blade 2192/M  
 D. Lancefield M Jessica 1006/M

**Sire: LANCEFIELD M BONDI 3588/M**

S. Lancefield D Dreaming 996/D  
 D. Lancefield M Mirane 1041M  
 D. Lancefield M Mirane 260/M

**S. JDH Sir Reno Manso (Imp)**

S. Lancefield M Rocafella Manso 1154/M  
 D. Lancefield M Shanoa Manso 214/M

**Dam: LANCEFIELD M MIRANE 2478/M**

**S. JDH Sir Reno Manso (Imp)**  
 D. Lancefield M Mirane 1422/M  
 D. Lancefield M Mirane 649/M



200 DAY WT.	400 DAY WT.	600 DAY WT.	CARCASE WT.	EMA SQCM	RBV %	JAP OX INDEX	LIVE EXPORT INDEX
+30 66%	+38 61%	+55 63%	+35 53%	+2.5 42%	+0.7 32%	\$+12	\$+6

**Notes:** Well bred 2yo, that's naturally very quiet.**Dam** 4 calves @ 472 dci. **Granddam** 4 calves @ 339 dci.

\$

**LOT 40 LANCEFIELD M BRENNER 6107/M**

H.B. LAM6107/MM(REG) Calved: 23.09.17 (25 mths) Colour: Grey

**S. JDH Mr Brooks Manso (Imp)**

S. Lancefield M Billionaire Manso 1377/M  
 D. Lancefield M Shanoa Manso 214/M

**Sire: LANCEFIELD M BLACKLIST 3384/M**

S. Lancefield M Profiler 582/M  
 D. Lancefield M Jessica 1698/M  
 D. Lancefield M Jessica Manso 298/M

**S. JDH Mr Brooks Manso (Imp)**

S. Lancefield M Busby Manso 1981/M  
 D. Lancefield M Shanoa Manso 806/M

**Dam: LANCEFIELD M SENORA 2249/M**

**S. JDH Dynasty Manso 30/1 (Imp)**  
 D. Lancefield M Senora 1243/M  
 D. Lancefield Senora 1715



200 DAY WT.	400 DAY WT.	600 DAY WT.	CARCASE WT.	EMA SQCM	RBV %	JAP OX INDEX	LIVE EXPORT INDEX
+34 66%	+46 62%	+62 63%	+43 53%	+1.4 43%	+0.7 32%	\$+21	\$+14

**Notes:** A good free moving bull with a lot of thickness.**Dam** 4 calves @ 475 dci. **Granddam** 2 calves @ 343 dci.

\$

**LOT 41 LANCEFIELD M BUSHMAN 6111/M**

H.B. LAM6111/MM(REG) Calved: 30.08.17 (26 mths) Colour: Grey

**S. JDH Mr Brooks Manso (Imp)**

S. Lancefield M Billionaire Manso 1377/M  
 D. Lancefield M Shanoa Manso 214/M

**Sire: LANCEFIELD M BLACKLIST 3384/M**

S. Lancefield M Profiler 582/M  
 D. Lancefield M Jessica 1698/M  
 D. Lancefield M Jessica Manso 298/M

**S. JDH Mr Melanson Manso (Imp)**

S. PBF Zachary Manso 277/8  
 D. FBC Lady Jesica Manso

**Dam: LANCEFIELD M BRANCHA 2413/M**

**S. JDH Leberation 79/1 (Imp)**  
 D. Lancefield M Brancha 1414/M  
 D. Lancefield M Brancha 603/M



200 DAY WT.	400 DAY WT.	600 DAY WT.	CARCASE WT.	EMA SQCM	RBV %	JAP OX INDEX	LIVE EXPORT INDEX
+35 66%	+45 61%	+59 62%	+38 52%	+2.5 41%	+1.0 31%	\$+24	\$+18

**Notes:** Bushman is an excellent quality type, of sound structure. His length and depth, optimum natural muscling, strong topline, and smoothness of finish equip him well for high level performance in today's beef industry. Mark him down to inspect.**Dam** 5 calves @ 447 dci. **Granddam** 8 calves @ 416 dci.

\$

**LOT 42 LANCEFIELD M ENERGY 5920/M**

H.B. LAM5920/MM(REG) Calved: 14.10.17 (24 mths) Colour: Grey

**S. JDH Mr Echo Manso (Imp)**

S. Lancefield M Editor Manso 1978/M  
 D. Lancefield M Shanoa Manso 802/M

**Sire: LANCEFIELD M EGUCHI 3967/M**

S. PBF Oryon Manso 939/7  
 D. Lancefield M Miss Shanoa 2212/M  
 D. Lancefield M Shanoa Dream 210/M

S. Lancefield M Billionaire Manso 1377/M  
 S. Lancefield M Blacklist 3384/M  
 D. Lancefield M Jessica 1698/M

**Dam: LANCEFIELD M CAMILLE 3604/M**

S. Lancefield M Buntine 1759  
 D. Lancefield M Camille 2041/M  
 D. Lancefield M Camille 413/M



200 DAY WT.	400 DAY WT.	600 DAY WT.	CARCASE WT.	EMA SQCM	RBV %	JAP OX INDEX	LIVE EXPORT INDEX
+27 66%	+37 61%	+47 63%	+32 51%	+1.5 40%	+1.0 30%	\$+15	\$+11

**Notes:** A wealth of high class breeding backs this 2yo. Energy displays tremendous carcass qualities. A combination of length, attractive muscle pattern and easy finishing ability highlight his value to discerning beef producers.**Dam** 1st calf; **Granddam** 5 calves @ 545 dci.

\$

**LOT 43 LANCEFIELD M EDGE 5903/M**

H.B. LAM5903/MM(REG) Calved: 16.09.17 (25 mths) Colour: Grey

**S. JDH Mr Echo Manso (Imp)**

S. Lancefield M Editor Manso 1978/M  
 D. Lancefield M Shanoa Manso 802/M

**Sire: LANCEFIELD M EGUCHI 3967/M**

S. PBF Oryon Manso 939/7  
 D. Lancefield M Miss Shanoa 2212/M  
 D. Lancefield M Shanoa Dream 210/M

S. Lancefield Moreton 1766 (P)  
 S. Elrose Marcello 9583 (P)  
 D. Elrose Riccadonna 3662

**Dam: LANCEFIELD M MELINA 3492/M**

S. Lancefield M Racketeer Manso 1794/M  
 D. Lancefield M Melina 2252/M  
 D. Lancefield M Melina 685/M (P)



200 DAY WT.	400 DAY WT.	600 DAY WT.	CARCASE WT.	EMA SQCM	RBV %	JAP OX INDEX	LIVE EXPORT INDEX
+24 65%	+33 60%	+40 63%	+30 51%	+2.0 38%	+0.8 29%	\$+20	\$+16

**Dam** 1st calf; **Granddam** 2 calves @ 323 dci.

\$

**LOT 44 LANCEFIELD M DERMOTT 5925/M**

H.B. LAM5925/MM(REG) Calved: 20.09.17 (25 mths) Colour: Grey

**S. JDH Sir Lawford Manso**

**S. JDH Denton De Manso 592/7 (Imp)**  
 D. JDH Lady Helene Manso

**Sire: VIVA DERMOTT****S. JDH Riddell Manso (Imp)**

D. Brahrock N Miss Dell Empress 78  
 D. Brahrock Super Empress 3141  
 S. Lancefield M Rocafella Manso 1154/M  
 S. Lancefield M Reacher 3522/M  
 D. Lancefield M Meryl 1419/M

**Dam: LANCEFIELD M LINDA 3470/M**

S. Lancefield Mercury Manso 534  
 D. Lancefield Linda 9447  
 D. Lancefield Linda 6274



200 DAY WT.	400 DAY WT.	600 DAY WT.	CARCASE WT.	EMA SQCM	RBV %	JAP OX INDEX	LIVE EXPORT INDEX
+36 58%	+49 53%	+73 55%	+38 45%	+3.9 36%	+0.9 26%	\$+32	\$+26

**Dam** 2 calves @ 353 dci. **Granddam** 12 calves @ 404 dci.

\$



**LOT 45 LANCEFIELD M SAINT 5798/M**

H.B. LAM5798/MM(REG) Calved: 11.09.17 (25 mths) Colour: Grey

S. JDH Sir Lawford Manso  
 S. JDH Mr Elmo Manso  
 D. JDH Lady Ellis Manso 178/2

**Sire: JDH SIR STRATTON MANSO 823/4 (IMP)**

S. JDH Madison De Manso  
 D. JDH Lady Sandy Manso  
 D. JDH Lady Earline Manso  
 S. Bizzy Brutus 2370  
 S. Lancefield D Bazuka 4722/D (P)  
 D. Lancefield Regal Lady 1674/D (Sc)

**Dam: LANCEFIELD M JACQUELINE 3448/M (SC)**

S. Lancefield M Romeo Manso 1790/M  
 D. Lancefield M Jacqueline 2471/M  
 D. Lancefield M Jacqueline 1806/M



200 DAY WT.	400 DAY WT.	600 DAY WT.	CARCASE WT.	EMA SQCM	RBV %	JAP OX INDEX	LIVE EXPORT INDEX
+34 64%	+49 61%	+67 61%	+37 50%	+3.6 40%	+1.1 29%	\$+34	\$+29

**Dam** 2 calves @ 410 dci. **Granddam** 4 calves @ 500 dci.

\$

**LOT 46 LANCEFIELD M SANFORD 5906/M (SCURRS)**

H.B. LAM5906/MM(REG) Calved: 03.09.17 (25 mths) Colour: Grey

S. JDH Sir Lawford Manso  
 S. JDH Mr Elmo Manso  
 D. JDH Lady Ellis Manso 178/2

**Sire: JDH SIR STRATTON MANSO 823/4 (IMP)**

S. JDH Madison De Manso  
 D. JDH Lady Sandy Manso  
 D. JDH Lady Earline Manso  
 S. PBF Oryon Manso 939/7  
 S. Lancefield M Oregon 2969/M (P)  
 D. Lancefield Molly 9478 (P)

**Dam: LANCEFIELD M CAMELIA 3457/M**

S. Lancefield M Finance 711/M  
 D. Lancefield M Camelia 1839/M  
 D. Lancefield M Camelia 849/M



200 DAY WT.	400 DAY WT.	600 DAY WT.	CARCASE WT.	EMA SQCM	RBV %	JAP OX INDEX	LIVE EXPORT INDEX
+25 65%	+36 62%	+40 62%	+25 51%	+3.7 41%	+0.9 29%	\$+13	\$+10

**Dam** 1st calf; **Granddam** 6 calves @ 435 dci.

\$

A/c Palmal Stud, Palmamal, Dingo.

**LOT 47 PALMAL PASCINAL 8349**

H.B. DJM8349M(REG) Calved: 14.08.17 (26 mths) Colour: Grey

S. JDH Sir Lawford Manso  
**S. JDH Sir Paul Manso (Imp)**  
 D. JDH Lady Britton Manso

**Sire: PALMAL PLYMOUTH 6791**

S. Lancefield Remrock 4174/1  
 D. Lancefield D Cheeky 5292/D (P)  
 D. Lancefield D Cheeky 4018/D (P)

**S. JDH Mr Echo Manso (Imp)**  
 S. Lancefield D Exclusive 3932/D  
 D. Lancefield D Fancy 2850/D

**Dam: PALMAL JENN 6044**

S. Bungoona Wickabie Manso 109/5  
 D. Lancefield D Jenn 4070/D  
 D. Lancefield D Jenn 2419/D



200 DAY WT.	400 DAY WT.	600 DAY WT.	CARCASE WT.	EMA SQCM	RBV %	JAP OX INDEX	LIVE EXPORT INDEX
+24 65%	+27 60%	+43 59%	+28 49%	+3.3 32%	+0.8 27%	\$+23	\$+19

**Notes:** Pascinal is a good tough, white grey bull exhibiting very good beef performance credentials. Just what you'd expect from the JDH Paul/JDH Echo cross. We point out, for full disclosure, there is a little white among his tail hair.

**Dam** 3 calves; **Granddam** 3 calves @ 399 dci.

\$

**LOT 48 PALMAL PIRELLI 8350 (POLL)**

H.B. DJM8350M(REG) Calved: 24.08.17 (26 mths) Colour: Grey

S. JDH Sir Lawford Manso  
**S. JDH Sir Paul Manso (Imp)**  
 D. JDH Lady Britton Manso

**Sire: PALMAL PLYMOUTH 6791**

S. Lancefield Remrock 4174/1  
 D. Lancefield D Cheeky 5292/D (P)  
 D. Lancefield D Cheeky 4018/D (P)

**S. JDH Mr Angelo Manso (Imp)**

S. Lancefield D Augustus 3115/D (Sc)  
 D. Lancefield Miss Atlas 3138 (Sc)

**Dam: LANCEFIELD D CHANTAL 5094/D (P)**

S. Glengarry Merlin  
 D. Lancefield D Chantal 854/D  
 D. Lancefield D Chantal 7461 (P)



200 DAY WT.	400 DAY WT.	600 DAY WT.	CARCASE WT.	EMA SQCM	RBV %	JAP OX INDEX	LIVE EXPORT INDEX
+21 64%	+24 60%	+36 59%	+23 49%	+3.0 32%	+0.7 27%	\$+19	\$+15

**Notes:** Another Plymouth son and this time a poll. Pirelli has good shape to him and the strength of head and breed character you want. He complements that with depth through the body, an outstanding square hindquarter, all in an attractive soft finished package.

**Dam** 4 calves @ 478 dci. **Granddam** 4 calves @ 432 dci.

\$

**LOT 49 PALMAL ELLINGTON 8396**

H.B. DJM8396M(REG) Calved: 02.11.17 (23 mths) Colour: Grey

S. JDH Woodson De Manso  
**S. JDH Sir Oballe Manso 750/7 (Imp)**  
 D. JDH Lady Callaghan Manso

**Sire: NCC ELESSAR**

**S. JDH Mr Boswick Manso (Imp)**  
 D. Brahrock Miss Bos V8 Empress  
 D. Brahrock V8 Empress Girl 2422

**S. JDH Riddell Manso (Imp)**

S. Lancefield D Riddell 3114/D  
 D. Lancefield D Estelle 1810/D

**Dam: PALMAL LILY 6205**

S. Lancefield D Doremus 559/D  
 D. Lancefield D Lily 2800/D  
 D. Lancefield D Lily 809/D



200 DAY WT.	400 DAY WT.	600 DAY WT.	CARCASE WT.	EMA SQCM	RBV %	JAP OX INDEX	LIVE EXPORT INDEX
+23 62%	+28 56%	+43 54%	+27 45%	+2.6 30%	+0.5 25%	\$+16	\$+12

**Dam** 3 calves @ 374 dci. **Granddam** 5 calves.

\$

**LOT 50 PALMAL PANCHE 8315**

H.B. DJM8315M(REG) Calved: 01.05.17 (29 mths) Colour: Grey

**S. JDH Sir Paul Manso (Imp)**  
 S. Lancefield D Primus 4929/D  
 D. Lancefield D Cheeky 2469/D

**Sire: PALMAL PASCOE 6598**

S. Lancefield D Augustus 3115/D (Sc)  
 D. Lancefield D Lily 4252/D (P)  
 D. Lancefield D Lily 809/D

S. JDH Sir Lawford Manso

**S. JDH Sir Alamo Manso (Imp)**

D. JDH Lady Vado Manso 751/5

**Dam: PALMAL MIMI 5667****S. MSP Esto Cherra 754 (Imp)**

D. Lancefield D Mimi 4246/D  
 D. PBF Mimi Manso 767/6



200 DAY WT.	400 DAY WT.	600 DAY WT.	CARCASE WT.	EMA SQCM	RBV %	JAP OX INDEX	LIVE EXPORT INDEX
+30 63%	+32 65%	+48 59%	+31 49%	+2.1 32%	+0.9 25%	\$+17	\$+13

**Dam** 3 calves; **Granddam** 6 calves @ 460 dci.

\$



## LOT 51 PALMAL DAWSON 8515

H.B. DJM8515M(REG) Calved: 25.08.17 (26 mths) Colour: Grey

S. JDH Sir Lawford Manso

**S. JDH Mr Elmo Manso (Imp)**

D. JDH Lady Ellis Manso 178/2

**Sire: NCC LORD DELAWARE**

**S. JDH Datapack Manso (Imp)**

D. El Ja Lady Dianna Manso

D. El Ja Silhouette Manso

**S. JDH Mr Deeds Manso (Imp)**

S. Lancefield D Dynamic 4343/D

D. PBF Gabriella Manso 918/7

**Dam: PALMAL ESTELLE 6622**

**S. JDH Sir Paul Manso (Imp)**

D. Lancefield D Estelle 5461/D

D. Lancefield D Estelle 4062/D



200 DAY WT.	400 DAY WT.	600 DAY WT.	CARCASE WT.	EMA SQCM	RBV %	JAP OX INDEX	LIVE EXPORT INDEX
+19 66%	+27 62%	+28 61%	+20 50%	+3.4 38%	+0.8 30%	\$+13	\$+10

**Notes:** Dam is a full blood sister to Palmal Dimension sold for \$50,000.

**Dam** 2 calves @ 367 dci.

\$

A/c 2AM Stud, Barwon Park, Dingo.

## LOT 52 2AM RAMBLER 6322

H.B. 2AM6322M(REG) Calved: 26.10.17 (24 mths) Colour: Grey

S. FBC W Jiver De Manso

S. Carinya Mario

D. Carinya Remona

**Sire: CARINYA RAMBO 5/421**

**S. JDH Riddell Manso (Imp)**

D. Carinya Portia

**D. JDH Lady Trisha Manso (Imp)**

S. Lancefield A Nitrate 2389 (Sc)

S. Lancefield A Nazareth 3625M (P)

D. Lancefield A Melba 2431

**Dam: 2AM ABERGAIL 5093 (P)**

S. Miandaly One Of Might 1158

D. Lancefield A Abergail 1773

D. Lancefield A Abergail 882



200 DAY WT.	400 DAY WT.	600 DAY WT.	CARCASE WT.	EMA SQCM	RBV %	JAP OX INDEX	LIVE EXPORT INDEX
+29 63%	+35 56%	+49 54%	+32 44%	+3.3 26%	+	\$+27	\$+23

**Notes:** Impressive carcass quality and performance in this bull. Rambler is a well made, long, square and thick bodied bull of excellent muscling. Light sheathed and an easy doer.

**Dam** 2 calves @ 344 dci. **Granddam** 6 calves @ 447 dci.

\$

## LOT 53 2AM EMBASSY 6436

H.B. 2AM6436M(REG) Calved: 27.10.17 (24 mths) Colour: Grey

**S. JDH Mr Echo Manso (Imp)**

S. Lancefield A Ecstrata 2303

D. Lancefield A Meryl 1306

**Sire: LANCEFIELD A ELUSIVE 4030M**

**S. JDH Sir Reno Manso (Imp)**

D. Lancefield A Josephina 1039

D. Lancefield Joesphina 2422

S. JDH Prescott Manso 82/6

**S. JDH Sir Reno Manso (Imp)**

D. JDH Lady Ly Manso

**Dam: LANCEFIELD A SARA 3963**

S. Lancefield Plymouth 8619

D. Lancefield Sara 2107

D. Lancefield Sara 9043



200 DAY WT.	400 DAY WT.	600 DAY WT.	CARCASE WT.	EMA SQCM	RBV %	JAP OX INDEX	LIVE EXPORT INDEX
+27 67%	+33 64%	+44 63%	+31 53%	+3.5 37%	+0.8 33%	\$+12	\$+7

**Dam** 4 calves @ 409 dci. **Granddam** 13 calves @ 366 dci.

\$

## LOT 54 2AM DEMARCUS 6263

H.B. 2AM6263M(REG) Calved: 18.08.17 (26 mths) Colour: Grey

S. JDH Sir Lawford Manso

**S. JDH Mr Elmo Manso (Imp)**

D. JDH Lady Ellis Manso 178/2

**Sire: NCC LORD DELAWARE**

**S. JDH Datapack Manso (Imp)**

D. El Ja Lady Dianna Manso

D. El Ja Silhouette Manso

**S. JDH Mr Echo Manso (Imp)**

S. Lancefield A Ecstata 2303

D. Lancefield A Meryl 1306

**Dam: 2AM RELANA 4988 (SC)**

S. Lancefield A Colossimo 1206 (P)

D. Lancefield A Relana 2098

D. Lancefield A Relana 696



200 DAY WT.	400 DAY WT.	600 DAY WT.	CARCASE WT.	EMA SQCM	RBV %	JAP OX INDEX	LIVE EXPORT INDEX
+22 62%	+30 59%	+32 59%	+22 49%	+3.7 39%	+0.9 31%	\$+12	\$+10

**Notes:** Demarcus is another excellent son of Delaware that has good length, ample growth and attractive natural muscling. Carries a strong head and big muzzle like all the quality Delaware progeny.

**Dam** a donor of 8 calves inc. 2 natural; **Granddam** 10 calves @ 369 dci.

\$

## LOT 55 2AM CAMPION 6581

H.B. 2AM6581M(REG) Calved: 21.10.17 (24 mths) Colour: Grey

**S. BNA Double Take Manso (Imp)**

S. Lancefield A Colossimo 1206 (P)

D. Lancefield Maisey 8346 (P)

**Sire: LANCEFIELD A CAMPAIGN 3805M (SC)**

**S. JDH Sir Reno Manso (Imp)**

D. Lancefield A Meryl Manso 1354

D. Lancefield Meryl Manso 9208

**S. JDH Karu Manso 800 (Imp)**

S. KP Chester

D. Brahrock Miss Garret Empress 1857

**Dam: LANCEFIELD A NICHOLA 896**

S. Lancefield Emperor Manso 4265

D. Lancefield A Nichola 8515

D. Lancefield A Nichola 300



200 DAY WT.	400 DAY WT.	600 DAY WT.	CARCASE WT.	EMA SQCM	RBV %	JAP OX INDEX	LIVE EXPORT INDEX
+27 64%	+36 59%	+51 57%	+30 49%	+3.1 31%	+0.8 29%	\$+15	\$+10

**Dam** 9 calves @ 419 dci. **Granddam** 6 calves @ 371 dci.

\$

## LOT 56 2AM DYNAMITE 6251

H.B. 2AM6251M(REG) Calved: 25.08.17 (26 mths) Colour: Grey

S. JDH Prescott Manso 82/6

**S. JDH Mr Deeds Manso (Imp)**

D. JDH Lady Ellis Manso 178/2

**Sire: LANCEFIELD D DYNAMIC 4343/D**

**S. JDH Mr Shannon Manso (Imp)**

D. PBF Gabriella Manso 918/7

D. FBC F Dorrie's Girl Manso 194FF

S. Lancefield A Nitrate 2389 (Sc)

S. Lancefield A Nazareth 3625M (P)

D. Lancefield A Melba 2431

**Dam: 2AM CASSANDRA 5070 (P)**

S. Lancefield A Mexico

D. Lancefield A Cassandra 2066

D. Lancefield Cassandra 1050



200 DAY WT.	400 DAY WT.	600 DAY WT.	CARCASE WT.	EMA SQCM	RBV %	JAP OX INDEX	LIVE EXPORT INDEX
+27 60%	+31 58%	+38 58%	+27 49%	+3.9 36%	+1.1 30%	\$+11	\$+9

**Dam** a donor of 3 calves inc. 2 natural; **Granddam** 9 calves @ 356 dci.

\$

Can't make it to the  
2019 Lancefield Brahmans Invitation Bull Sale?  
We've got you covered with online bidding.

## ONLINE BIDDING PLATFORM

Visit [www.rlx.com.au](http://www.rlx.com.au) and filter to find Lancefield Brahmans Invitation Bull Sale on the RLX Sales page.

Select 'Bid Online'. This link will take you to the online bidding registration page.

Monday 28 Oct 2019			
CQLX	Stud / Cattle	FEATURE LANCEFIELD INVITATION SALE	<a href="#">Watch / Bid Online</a> <small>To register click Bid Online. Register 24 hours before sale starts.</small>

Complete all required registration information, as prompted.

Once registration is complete, your request will be submitted for approval.

On sale day, visit the RLX website,  
click 'Bid Online' and follow prompts.

For further information - visit [www.rlx.com.au](http://www.rlx.com.au)

***Specialists in***

- Livestock • Rural Property • Clearing Sales
- Residential Sales • Commercial Leasing

## **Prompt, Professional & Personal**

*Service from staff with Rural Backgrounds so they know and understand your needs*

**GARY HOURN 0407 971 140**

**GARY BISHOP 0439 982 588**

**BRAD HANSON 0408 684 612**

**BRAD PASSFIELD 0459 160 791**

**MATT BISHOP 0437 972 292**

**ALEX DODSON 0437 837 520**

**JOHN CRERAR 0427 678 901**

## **HOURN & BISHOP QLD**



**☎ (07) 4997 2227**

P.O. BOX 172, Moura Q 4718  
21 Gillespie St, Moura Q 4718  
Fax (07) 4997 2225

**[www.hournbishopqld.com.au](http://www.hournbishopqld.com.au)**

**Locally Owned and Operated in Central Queensland**



**You no longer have to mortgage  
your property to increase your  
cattle numbers...**

The concept of leasing cattle may be unfamiliar to you, but its benefits are causing a great deal of interest in the cattle industry.

In effect, cattle leasing is no different to leasing any other piece of equipment that relates to the grazing industry. It is similar to leasing a vehicle, tractor or irrigation equipment for use on your property; and it gives you a financially flexible method of increasing your livestock numbers.

Lending can range from a single \$10,000 stud bull up to a \$500,000 facility limit, dependent on the size of your current herd.



To learn more, download our  
**What is Cattle Leasing?**  
information booklet at:

**[www.cattleleasing.com.au](http://www.cattleleasing.com.au)**

**For an obligation free chat call 1300 358 346.**











# FEEDPRO

A U S T R A L I A

**Proud Nutritional Partners of  
Lancefield & Elrose Brahman**

## **DRY LICK SUPPLEMENTS**

Vast range to meet all  
requirements of cattle.

## **MOLASSES BASED SUPPLEMENTS**

Yearling, Developer &  
Breeder Blends.

## **STOCK FEED RATIONS**

Weaner, Feedlot, Stud &  
Sale Options

## **TURBOPRO SLURRY RATION**

Molasses production blends

For a **DEEPER**  
understanding of  
livestock nutrition

# 1300 272 545





LOT 33



LOT 34



LOT 35



LOT 36 (POLL)



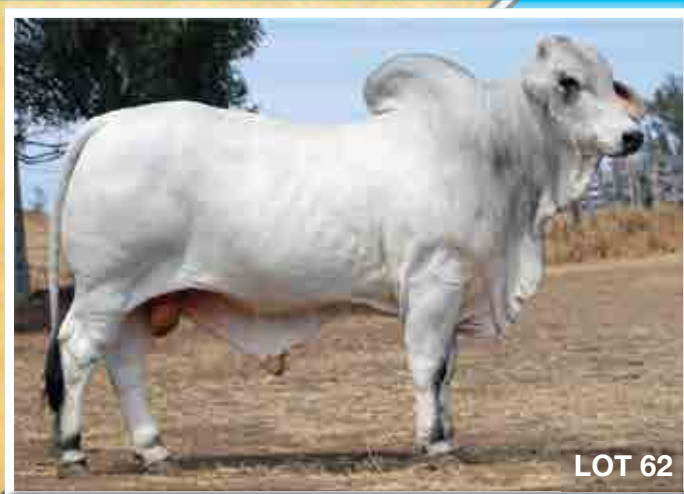
LOT 38



LOT 42



LOT 52



LOT 62



## GET SET FOR SPRING

There's no stopping a Kubota. Each machine is engineered to always perform at its peak, even when conditions are at their toughest. This means that whether you're working on the land or the city, you get results you can count on, no matter what elements you're faced with. You have the will, Kubota has the way. Together, you can be a force of nature.



**ROCKHAMPTON**  
(07) 4930 0333

**EMERALD**  
(07) 4982 4824

**BILOELA**  
(07) 4992 1099

**MACKAY**  
(07) 4952 1600



# BLUE RIBBON STOCKFEEDS

*The Winning Edge*

## PELLETS PROVE PERFORMANCE

Blue Ribbon Stockfeeds  
is proud to be involved with  
the Lancefield Brahmans  
Invitation Sale



**100% OWNED  
AND OPERATED**

[www.blueribbonstockfeeds.com.au](http://www.blueribbonstockfeeds.com.au)







### LOT 57 2AM CURRUMBIN 6552 (POLL)

H.B. 2AM6552M(REG) Calved: 01.10.17 (24 mths) Colour: Grey

S. Lancefield A Colossimo 1206 (P)  
S. Lancefield A Columbus 2138 (P)  
D. Lancefield A Brancha 843

**Sire: 2AM CARUMBA 4495M (SC)**

S. Lancefield A Jet Power 437  
D. Lancefield A Banca 2648  
D. Lancefield Banca 2015

**S. JDH Rick Manso (Imp)**

S. Lancefield A Rick Manso 1512  
D. Lancefield A Rendiva Manso 857

**Dam: LANCEFIELD A MISS STANLEY 3674**

S. KP Hallmark  
D. Lancefield A Miss Stanley 2392  
D. Lancefield Miss Stanley 3215



200 DAY WT.	400 DAY WT.	600 DAY WT.	CARCASE WT.	EMA SQCM	RBY %	JAP OX INDEX	LIVE EXPORT INDEX
+24 65%	+33 61%	+45 60%	+27 50%	+3.7 28%	+0.9 27%	\$+14	\$+11

**Dam** 6 calves @ 363 dci.

\$

A/c Elrose Stud, Brigalow, Theodore.

### LOT 58 ELROSE LIAM 16567

H.B. ELR16567M(REG) Calved: 18.09.17 (25 mths) Colour: Grey

**S. JDH Mr Liberty Manso 166 (Imp)**

S. Tartrus Lucas Manso 5474  
D. Tartrus Libby Manso 5260

**Sire: ELROSE LUCAS 8856**

S. Lancefield Armada 8215  
D. Elrose Grey Lisa 3735  
D. Elrose Grey Lisa 1940  
S. FBC D Mr Arnie Manso  
S. FBC D Terminator Manso 899D  
D. FBC D Miss Suzie Manso 678D

**Dam: ELROSE MADDISON MANSO 8826**

S. Lancefield Burton Manso 3251  
D. Elrose Maddison Manso 6684  
D. PBF Lady Maddison 504/5



200 DAY WT.	400 DAY WT.	600 DAY WT.	CARCASE WT.	EMA SQCM	RBY %	JAP OX INDEX	LIVE EXPORT INDEX
+23 70%	+30 74%	+44 77%	+26 60%	+3.9 47%	+0.9 36%	\$+17	\$+13

**Notes:** Attractive growth, length and softness are features of this bull.

**Dam** 3 calves @ 440 dci.

\$

### LOT 59 ELROSE LANCELOT 16485

H.B. ELR16485M(REG) Calved: 07.10.17 (24 mths) Colour: Grey

**S. JDH Leberation 79/1 (Imp)**

S. Lancefield D Laurette 2393/D  
D. Lancefield D Emma 1224/D

**Sire: ELROSE LARIAT 11874**

S. Lancefield Signature 9153  
D. Elrose Mandy 4469  
D. Elrose Mandy 2640  
S. El Ja Trademark Manso  
S. Clukan T Trademark 990  
D. Clukan Brianna 603

**Dam: ELROSE RAHLEE 12030**

S. Brahrock White Hawk Man 2497  
D. Elrose Rahlee 4996  
D. Elrose Rahlee 3rd



200 DAY WT.	400 DAY WT.	600 DAY WT.	CARCASE WT.	EMA SQCM	RBY %	JAP OX INDEX	LIVE EXPORT INDEX
+18 67%	+24 71%	+20 75%	+15 58%	+4.0 44%	+1.2 34%	\$+18	\$+18

**Dam** 1st calf.

\$

### LOT 60 ELROSE BRYSON 16584

H.B. ELR16584M(REG) Calved: 13.10.17 (24 mths) Colour: Grey

S. JDH Mr Charley Manso 590/6

**S. Mr V8 464/4 (Imp)**

D. Ms Claydesta 203-807U5

**Sire: CARINYA BOSTON**

**S. JDH Databank Manso (Imp)**

D. Carinya Miss Amanda  
D. Carinya 2128  
S. Lancefield Mason Manso 7167  
S. Lancefield Moreton 1766 (P)  
D. Lancefield Cherie 8353

**Dam: ELROSE PRU 5176**

S. Tartrus Madison Manso 2438  
D. Elrose Pru 3rd  
D. Elrose Pru



200 DAY WT.	400 DAY WT.	600 DAY WT.	CARCASE WT.	EMA SQCM	RBY %	JAP OX INDEX	LIVE EXPORT INDEX
+24 71%	+42 75%	+52 77%	+31 62%	+2.4 49%	+0.7 39%	\$+39	\$+33

**Dam** 9 calves @ 344 dci.

\$

### LOT 61 ELROSE BEN 17205

H.B. ELR17205M(REG) Calved: 19.10.17 (24 mths) Colour: Grey

S. Lancefield S Branson 4032/1

S. Elrose Bentley 9484  
D. Elrose Annie Oakley 5548

**Sire: ELROSE BENJAMIN 12290**

S. Yenda V 49/5  
D. Elrose 9418  
D. Elrose 3086  
S. Elrose Dominance  
S. Elrose Dominant 9258  
D. Elrose 6514

**Dam: ELROSE NORA 12762**

S. Elrose Artesian 6231  
D. Elrose Nora 9009  
D. Elrose Nora 4767



200 DAY WT.	400 DAY WT.	600 DAY WT.	CARCASE WT.	EMA SQCM	RBY %	JAP OX INDEX	LIVE EXPORT INDEX
+29 66%	+40 70%	+55 65%	+30 53%	+4.1 37%	+1.2 30%	\$+34	\$+31

**Dam** 1st calf.

\$



**LOT 62 ELROSE MAURICE 16564**

H.B. ELR16564M(REG) Calved: 10.09.17 (25 mths) Colour: Grey

**S. JDH Modelo Manso 268/5 (Imp)**S. Elrose Maurice Manso  
D. PBF Sweet Bessie Manso 4**Sire: ELROSE 11606**S. Lancefield A Ratio 1820  
D. Elrose Kate 8646  
D. Elrose Kate 5699**S. JDH Karu Manso 800 (Imp)**S. Yenda V 49/5  
D. Yenda Miss Cameo 168/0**Dam: ELROSE 9139**S. Tartrus Madison Manso 2438  
D. Elrose Matillda 2nd  
D. Elrose Matillda

200 DAY WT.	400 DAY WT.	600 DAY WT.	CARCASE WT.	EMA SQCM	RBV %	JAP OX INDEX	LIVE EXPORT INDEX
+22 70%	+26 73%	+40 77%	+23 60%	+2.5 46%	+1.0 36%	\$+32	\$+29

**Dam** 10 calves @ 356 dci.

§

**LOT 63 ELROSE GOLD RUSH 17361**

H.B. ELR17361M(REG) Calved: 22.09.17 (25 mths) Colour: Grey

**S. JDH Mr Brooks Manso (Imp)**S. Lancefield M Billionaire Manso 1377/M  
D. Lancefield M Shanoa Manso 214/M**Sire: ELROSE GOLD BULLION****S. JDH Mr Woodman Manso (Imp)**D. PBF Nellie's Girl Manso 449/5  
D. FBC F Dorries's Girl Manso 194FF  
S. Lancefield Significant 9159  
S. Elrose Significance  
D. Elrose Awesome**Dam: ELROSE 8593****S. JDH Mr Rem Manso 433 (Imp)**D. Carinya 5/994  
D. Carinya Miss Karu

200 DAY WT.	400 DAY WT.	600 DAY WT.	CARCASE WT.	EMA SQCM	RBV %	JAP OX INDEX	LIVE EXPORT INDEX
+25 70%	+31 74%	+37 76%	+24 61%	+3.3 49%	+1.3 39%	\$+21	\$+20

**Dam** 4 calves @ 348 dci.

§

**LOT 64 ELROSE BRANDT 17359**

H.B. ELR17359M(REG) Calved: 05.10.17 (24 mths) Colour: Grey

S. Lancefield Buster Manso 3253  
S. Lancefield S Branson 4032/1  
D. Lancefield Ifley 1334**Sire: ELROSE BRANDON 9499**S. FBC D Major De Manso  
D. Elrose Miss Press 5095  
D. Elrose Miss Press 3508  
S. JJ Press Didor 208/1**S. JJ Cuatro Didor 919 (Imp)**

D. JJ Miss Didor Crat 201/1

**Dam: ELROSE MISS DIDOR 3201**S. FBC Sir Don Manso  
D. Elrose 1626  
D. Elrose Neomi 1025

200 DAY WT.	400 DAY WT.	600 DAY WT.	CARCASE WT.	EMA SQCM	RBV %	JAP OX INDEX	LIVE EXPORT INDEX
+25 70%	+32 74%	+42 76%	+26 60%	+5.9 45%	+1.5 36%	\$+25	\$+23

**Dam** 12 calves @ 370 dci.

§

A/c Lancefield M Stud, Eulogie, Dululu.

**LOT 65 LANCEFIELD M RUTHERFORD 5963/M**

H.B. LAM5963/MM(REG) Calved: 12.09.17 (25 mths) Colour: Grey

S. JDH Prescot Manso 82/6

**S. JDH Sir Reno Manso (Imp)**

D. JDH Lady Ly Manso

**Sire: LANCEFIELD M ROMEO MANSO 1790/M**

S. JDH Datapack Manso

**D. JDH Lady Robin Manso (Imp)**

D. JDH Lady Selim Manso

**S. JDH Sir Reno Manso (Imp)**S. Lancefield M Rocafella Manso 1154/M  
D. Lancefield M Shanoa Manso 214/M**Dam: LANCEFIELD M CHEEKY 2492/M****S. JDH Leberation 79/1 (Imp)**

D. Lancefield M Cheeky 1466/M

D. Lancefield M Cheeky 617/M



200 DAY WT.	400 DAY WT.	600 DAY WT.	CARCASE WT.	EMA SQCM	RBV %	JAP OX INDEX	LIVE EXPORT INDEX
+35 67%	+42 66%	+61 67%	+39 59%	+5.6 54%	+1.2 38%	\$+27	\$+21

**Notes:** Rutherford is an impressive young bull in many ways. He presents as a high quality, strong breed character individual of excellent pigment. Lovely length to him, great thickness, and full and deep in the flank. Strong head on him. Studmasters will find he appeals as a quality prospect that will deliver Sire sons. The Romeo sire has done an excellent job for us for years and this is another of his top sons. Highly recommended.**Dam** 4 calves @ 482 dci. **Granddam** 4 calves @ 353 dci.

§

**LOT 66 LANCEFIELD M EDUARDO 5912/M**

H.B. LAM5912/MM(REG) Calved: 17.09.17 (25 mths) Colour: Grey

**S. JDH Mr Echo Manso (Imp)**S. Lancefield M Editor Manso 1978/M  
D. Lancefield M Shanoa Manso 802/M**Sire: LANCEFIELD M EGUCHI 3967/M**S. PBF Oryon Manso 939/7  
D. Lancefield M Miss Shanoa 2212/M  
D. Lancefield M Shanoa Dream 210/M  
S. Lancefield Moreton 1766 (P)

S. Elrose Marcello 9583 (P)

D. Elrose Riccadonna 3662

**Dam: LANCEFIELD M BRANCHA 3489/M (P)**

S. PBF Zachary Manso 277/8

D. Lancefield M Brancha 2413/M

D. Lancefield M Brancha 1414/M



200 DAY WT.	400 DAY WT.	600 DAY WT.	CARCASE WT.	EMA SQCM	RBV %	JAP OX INDEX	LIVE EXPORT INDEX
+19 65%	+24 59%	+32 62%	+21 50%	+2.3 37%	+0.6 28%	\$+16	\$+13

**Notes:** Eduardo shows an attractive combination of beef credentials and breed qualities. He's another of our eye catching Eguchi sons that is well muscled over a long body and he carries a good set of testicles.**Dam** 1st calf; **Granddam** 5 calves @ 447 dci.

§

**LOT 67 LANCEFIELD M BOOTLEGGER 5936/M**

H.B. LAM5936/MM(REG) Calved: 26.09.17 (25 mths) Colour: Grey

**S. JDH Mr Brooks Manso (Imp)**S. Lancefield M Billionaire Manso 1377/M  
D. Lancefield M Shanoa Manso 214/M**Sire: LANCEFIELD M BLACKLIST 3384/M**S. Lancefield M Profiler 582/M  
D. Lancefield M Jessica 1698/M  
D. Lancefield M Jessica Manso 298/M**S. JDH Sir Reno Manso (Imp)**S. Lancefield M Rocafella Manso 1154/M  
D. Lancefield M Shanoa Manso 214/M**Dam: LANCEFIELD M JESSICA 2226/M****S. BNA Double Take Manso (Imp)**D. Lancefield M Jessica 1085/M  
D. Lancefield M Jessica Manso 297/M

200 DAY WT.	400 DAY WT.	600 DAY WT.	CARCASE WT.	EMA SQCM	RBV %	JAP OX INDEX	LIVE EXPORT INDEX
+36 67%	+45 64%	+60 65%	+39 55%	+2.0 46%	+1.0 35%	\$+27	\$+20

**Dam** 4 calves @ 629 dci. **Granddam** 4 calves @ 610 dci.

§



**LOT 68 LANCEFIELD M ECLIPSE 5905/M**

H.B. LAM5905/MM(REG) Calved: 14.09.17 (25 mths) Colour: Grey

**S. JDH Mr Echo Manso (Imp)**

S. Lancefield M Editor Manso 1978/M

D. Lancefield M Shanoa Manso 802/M

**Sire: LANCEFIELD M EGUCHI 3967/M**

S. PBF Oryon Manso 939/7

D. Lancefield M Miss Shanoa 2212/M

D. Lancefield M Shanoa Dream 210/M

S. Lancefield M Billionaire Manso 1377/M

S. Lancefield M Blacklist 3384/M

D. Lancefield M Jessica 1698/M

**Dam: LANCEFIELD M CONNIE 3603/M**

S. Lancefield M Buntine 1759

D. Lancefield M Connie 1082/M

D. Lancefield M Connie 9852



200 DAY WT.	400 DAY WT.	600 DAY WT.	CARCASE WT.	EMA SQCM	RBY %	JAP OX INDEX	LIVE EXPORT INDEX
+29 66%	+42 59%	+57 62%	+36 50%	+3.2 38%	+0.9 28%	\$+35	\$+30

**Notes:** Heavy natural muscling is a feature of Eclipse. Bred from a strong fertility damline.**Dam** 2 calves @ 358 dci. **Granddam** 10 calves @ 412 dci.

\$

**LOT 69 LANCEFIELD M BEAUDESERT 5900/M**

H.B. LAM5900/MM(REG) Calved: 30.10.17 (24 mths) Colour: Grey

S. Lancefield M Blade 2192/M

S. Lancefield M Bondi 3588/M

D. Lancefield M Mirane 1041/M

**Sire: LANCEFIELD M BONTOLT 4710/M****S. JDH Sir Paul Manso (Imp)**

D. Lancefield M Paris Manso 2470/M

D. Lancefield M Paris Manso 1830/M

S. Lancefield M Billionaire Manso 1377/M

S. Lancefield M Blade 2192/M

D. Lancefield M Jessica 1006/M

**Dam: LANCEFIELD M PARIS 3654/M**

S. Lancefield M Dakar 743/M

D. Lancefield M Paris 2220/M (Sc)

D. Lancefield M Paris 1230/1



200 DAY WT.	400 DAY WT.	600 DAY WT.	CARCASE WT.	EMA SQCM	RBY %	JAP OX INDEX	LIVE EXPORT INDEX
+34 61%	+44 56%	+66 60%	+37 48%	+2.5 35%	+1.1 26%	\$+26	\$+22

**Notes:** Beaudesert is a white grey, soft and stylish bull, not yet 2yo. He's long bodied and has a great temperament as well.**Dam** 1st calf; **Granddam** 3 calves @ 539 dci.

\$

**LOT 70 LANCEFIELD M EMILIO 5924/M**

H.B. LAM5924/MM(REG) Calved: 23.09.17 (25 mths) Colour: Grey

**S. JDH Mr Echo Manso (Imp)**

S. Lancefield M Editor Manso 1978/M

D. Lancefield M Shanoa Manso 802/M

**Sire: LANCEFIELD M EGUCHI 3967/M**

S. PBF Oryon Manso 939/7

D. Lancefield M Miss Shanoa 2212/M

D. Lancefield M Shanoa Dream 210/M

S. Lancefield M Reno's Pride 1104/M

S. Lancefield M Ruffo 3170/M

D. Lancefield M Therese 1487/M

**Dam: LANCEFIELD M RHONA 3625/M**

S. Lancefield D Dreaming 996/D

D. Lancefield M Rhona 661/M

D. Lancefield M Rhona 8167



200 DAY WT.	400 DAY WT.	600 DAY WT.	CARCASE WT.	EMA SQCM	RBY %	JAP OX INDEX	LIVE EXPORT INDEX
+31 66%	+42 60%	+56 63%	+35 51%	+3.2 38%	+1.0 28%	\$+17	\$+12

**Dam** 1st calf; **Granddam** 7 calves @ 431 dci.

\$

**LOT 71 LANCEFIELD M EMMERSON 5922/M (SCURRS)**

H.B. LAM5922/MM(REG) Calved: 15.09.17 (25 mths) Colour: Grey

**S. JDH Mr Echo Manso (Imp)**

S. Lancefield M Editor Manso 1978/M

D. Lancefield M Shanoa Manso 802/M

**Sire: LANCEFIELD M EGUCHI 3967/M**

S. PBF Oryon Manso 939/7

D. Lancefield M Miss Shanoa 2212/M

D. Lancefield M Shanoa Dream 210/M

S. Lancefield Moreton 1766 (P)

S. Elrose Marcello 9583 (P)

D. Elrose Riccadonna 3662

**Dam: LANCEFIELD M BRANCHA 3491/M (P)**

S. Lancefield M Rocafella Manso 1154/M

D. Lancefield M Brancha 2223/M

D. Lancefield M Brancha 1020/M



200 DAY WT.	400 DAY WT.	600 DAY WT.	CARCASE WT.	EMA SQCM	RBY %	JAP OX INDEX	LIVE EXPORT INDEX
+22 65%	+31 61%	+40 63%	+28 51%	+1.2 39%	+0.6 29%	\$+17	\$+12

**Dam** 1st calf; **Granddam** 6 calves @ 383 dci.

\$

**LOT 72 LANCEFIELD M BARLOW 6123/M**

H.B. LAM6123/MM(REG) Calved: 17.09.17 (25 mths) Colour: Grey

S. Lancefield M Billionaire Manso 1377/M

S. Lancefield M Blade 2192/M

D. Lancefield M Jessica 1006/M

**Sire: LANCEFIELD M BONDY 3588/M**

S. Lancefield D Dreaming 996/D

D. Lancefield M Mirane 1041/M

D. Lancefield M Mirane 260/M

**S. JDH Sir Reno Manso (Imp)**

S. Lancefield M Rocafella Manso 1154/M

D. Lancefield M Shanoa Manso 214/M

**Dam: LANCEFIELD M JOANNE 2483/M****S. JDH Mr Deeds Manso (Imp)**

D. Lancefield M Joanne 1496/M

D. Lancefield M Joanne 652/M



200 DAY WT.	400 DAY WT.	600 DAY WT.	CARCASE WT.	EMA SQCM	RBY %	JAP OX INDEX	LIVE EXPORT INDEX
+31 66%	+36 61%	+60 63%	+36 53%	+1.9 41%	+0.9 30%	\$+26	\$+20

**Dam** 4 calves @ 477 dci. **Granddam** 3 calves @ 365 dci.

\$

A/c Palmal Stud, Palmal, Dingo.

**LOT 73 PALMAL DALRIMPLE 8322**

H.B. DJM8322M(REG) Calved: 05.09.17 (25 mths) Colour: Grey

S. JDH Sir Lawford Manso

**S. JDH Mr Elmo Manso (Imp)**

D. JDH Lady Ellis Manso 178/2

**Sire: NCC LORD DELAWARE****S. JDH Datapack Manso (Imp)**

D. El Ja Lady Dianna Manso

D. El Ja Silhouette Manso

**S. JDH Baxter Manso 33/1 (Imp)**

S. Lancefield Buster Manso 3253

D. Lancefield Mary Lou Manso 1897

**Dam: LANCEFIELD ROXY MANO 4273/1****S. JDH Rick Manso (Imp)**

D. Lancefield Shania Manso 3754

D. Lancefield Shania Manso 1833



200 DAY WT.	400 DAY WT.	600 DAY WT.	CARCASE WT.	EMA SQCM	RBY %	JAP OX INDEX	LIVE EXPORT INDEX
+20 66%	+28 65%	+29 64%	+23 55%	+3.1 45%	+0.8 35%		

**Dam** 65 calves ET, IVF & natural.

\$

## LOT 74 PALMAL DELACORT 8338

H.B. DJM8338M(REG) Calved: 10.09.17 (25 mths) Colour: Grey

S. JDH Sir Lawford Manso

**S. JDH Mr Elmo Manso (Imp)**

D. JDH Lady Ellis Manso 178/2

**Sire: NCC LORD DELAWARE**

**S. JDH Datapack Manso (Imp)**

D. El Ja Lady Dianna Manso

D. El Ja Silhouette Manso

**S. JDH Baxter Manso 33/1 (Imp)**

S. Lancefield Buster Manso 3253

D. Lancefield Mary Lou Manso 1897

**Dam: LANCEFIELD ROXY MANSO 4273/1**

**S. JDH Rick Manso (Imp)**

D. Lancefield Shania Manso 3754

D. Lancefield Shania Manso 1833



200 DAY WT.	400 DAY WT.	600 DAY WT.	CARCASE WT.	EMA SQCM	RBV %	JAP OX INDEX	LIVE EXPORT INDEX
+20 66%	+28 65%	+29 64%	+23 55%	+3.1 45%	+0.8 35%	\$+16	\$+13

**Dam** 65 calves ET, IVF & natural.

\$

## LOT 75 PALMAL DOTSWOOD 8337

H.B. DJM8337M(REG) Calved: 07.09.17 (25 mths) Colour: Grey

S. JDH Sir Lawford Manso

**S. JDH Mr Elmo Manso (Imp)**

D. JDH Lady Ellis Manso 178/2

**Sire: NCC LORD DELAWARE**

**S. JDH Datapack Manso (Imp)**

D. El Ja Lady Dianna Manso

D. El Ja Silhouette Manso

**S. JDH Baxter Manso 33/1 (Imp)**

S. Lancefield Buster Manso 3253

D. Lancefield Mary Lou Manso 1897

**Dam: LANCEFIELD ROXY MANSO 4273/1**

**S. JDH Rick Manso (Imp)**

D. Lancefield Shania Manso 3754

D. Lancefield Shania Manso 1833



200 DAY WT.	400 DAY WT.	600 DAY WT.	CARCASE WT.	EMA SQCM	RBV %	JAP OX INDEX	LIVE EXPORT INDEX
+20 66%	+28 65%	+29 64%	+23 55%	+3.1 45%	+0.8 35%	\$+16	\$+13

**Notes:** A well credentialed, dark grey, strong pigment bull carrying all the best of the qualities of his sire. Again his damline breeding (Buster/Shania) enhances his genetic strength to breed on with success. We like his very desirable natural muscle expression, length and softness. Cattle producers looking for strong beef appeal in a hardy, healthy, good constitution sire that will handle with ease any country or conditions, then this Delaware son deserves your inspection.

**Dam** 65 calves ET, IVF & natural.

\$

## LOT 76 PALMAL FOSTERS 8330

H.B. DJM8330M(REG) Calved: 14.09.17 (25 mths) Colour: Grey

S. JDH Sir Lawford Manso

S. JDH Prophet Manso

D. JDH Miss Suzanne Manso

**Sire: JDH MR FULTON MANSO 371/8 (IMP)**

S. JDH Sir Bhutan Manso 498/6

D. JDH Ms Rios Manso

D. JDH Athalia Manso

S. JDH Prescott Manso 82/6

**S. JDH Mr Deeds Manso (Imp)**

D. JDH Lady Ellis Manso 178/2

**Dam: PALMAL ROXY 6294**

S. Lancefield Buster Manso 3253

D. Lancefield Roxy Manso 4273/1

D. Lancefield Shania Manso 3754



200 DAY WT.	400 DAY WT.	600 DAY WT.	CARCASE WT.	EMA SQCM	RBV %	JAP OX INDEX	LIVE EXPORT INDEX
+27 53%	+33 52%	+40 51%	+29 44%	+3.6 35%	+1.0 27%	\$+13	\$+10

**Notes:** The first offering of our JDH Mr Fulton Manso sons is Flintoff, bred out of our strong and very successful producing Deeds/Buster/Shania cowline. We have retained 2 full brothers to this fellow as sires.

**Dam** 8 calves inc. 2 natural; **Granddam** 65 calves ET, IVF & natural.

\$

## LOT 77 PALMAL PEDRO 8394

H.B. DJM8394M(REG) Calved: 14.10.17 (24 mths) Colour: Grey

S. JDH Sir Lawford Manso

**S. JDH Sir Paul Manso (Imp)**

D. JDH Lady Britton Manso

**Sire: LANCEFIELD D PRIMUS 4929/D**

S. Lancefield D Doremus 559/D

D. Lancefield D Cheeky 2469/D

D. Lancefield D Cheeky 66/D

**S. JDH Riddell Manso (Imp)**

S. Lancefield D Riddell 3114/D

D. Lancefield D Estelle 1810/D

**Dam: PALMAL CARA 6415**

S. Elrose Asset

D. Lancefield D Cara 2438/D

D. Lancefield D Cara 626/D

**Dam** 2 calves @ 355 dci. **Granddam** 6 calves @ 354 dci.

\$

A/c Elrose Stud, Brigalow, Theodore.

## LOT 78 ELROSE HERES PROOF 16229 (POLL)

H.B. ELR16229M(REG) Calved: 05.10.17 (24 mths) Colour: Grey

**S. JME Mr Esto 28 (Imp) (P)**

S. Clukan Esto Power 223/1 (P)

D. Clukan Edwina 073

**Sire: ELROSE LIVING PROOF 11579 (P)**

S. Lancefield Burton Manso 3251

D. Elrose Ghost Gum 7165

D. Elrose Ghost Gum 3908

**S. JDH Palestimo R Manso (Imp)**

S. PBF Rockaby Manso 466/5

D. FBC F Lady Doris Manso 200FF

**Dam: ELROSE CAROLYN 9847**

S. Lancefield Signature 9153

D. Elrose Carolyn 5989

D. Elrose Carolyn 3rd



200 DAY WT.	400 DAY WT.	600 DAY WT.	CARCASE WT.	EMA SQCM	RBV %	JAP OX INDEX	LIVE EXPORT INDEX
+34 68%	+58 72%	+74 74%	+41 58%	+4.9 43%	+1.6 34%	\$+51	\$+46

**Notes:** Heres Proof is a smart quality poll of excellent volume & spring of rib. Just great beef industry qualities is how you'd sum him up. Cattle producers should assess his length hip to pin, excellent muscle expression & smooth & soft coverage, his fullness of flank & his square, deep hindquarter, & we're sure you will agree. Good testicles as well. His genetic combination of Burton, Palestimo, Signature & Ghost Gum enhances his prospects to breed with consistent success.

**Dam** 3 calves @ 402 dci.

\$

## NO LOT 79

## LOT 80 ELROSE TIP TOP 17290

H.B. ELR17290M(REG) Calved: 08.10.17 (24 mths) Colour: Grey

**S. JDH Rick Manso (Imp)**

S. Lancefield A Ratio 1820

D. Lancefield A Venus 992 (Sc)

**Sire: ELROSE TOP NOTCH**

S. Kenrol Alianz

D. Elrose 5253

D. Elrose 3248

S. PBF McCulloch Manso

S. Elrose McMannis

D. Elrose Annie De Manso 3490

**Dam: ELROSE 10857**

S. Lancefield Bellissimo 8764

D. Elrose 3725

D. Elrose 1921



200 DAY WT.	400 DAY WT.	600 DAY WT.	CARCASE WT.	EMA SQCM	RBV %	JAP OX INDEX	LIVE EXPORT INDEX
+30 66%	+44 71%	+54 66%	+30 55%	+3.6 38%	+1.2 31%	\$+40	\$+34

**Dam** 3 calves @ 352 dci.

\$

## LOT 81 ELROSE SHERIFF 16285

H.B. ELR16285M(REG) Calved: 04.11.17 (23 mths) Colour: Grey

S. NCC Sugarwood  
S. Carinya Kirkwood  
D. Carinya Miami

**Sire: NCC MARSHALL**

**S. JDH Sir Marri Manso (Imp)**  
D. Brahrock Marri Empress 3742  
D. Brahrock Miss Empress 1412  
S. Lancefield M Billionaire Manso 1377/M  
S. Elrose All Class 8486  
D. Elrose Springtime 3994

**Dam: ELROSE PIE 11199**

S. Elrose Pharoah 4873  
D. Elrose Pie 7110  
D. Elrose Pie 5091



200 DAY WT.	400 DAY WT.	600 DAY WT.	CARCASE WT.	EMA SQCM	RBV %	JAP OX INDEX	LIVE EXPORT INDEX
+40 67%	+51 66%	+69 75%	+37 57%	+8.1 43%	+1.8 32%	\$+34	\$+28

**Dam** 2 calves @ 368 dci.

\$

## LOT 82 ELROSE MERCHANT 16544

H.B. ELR16544M(REG) Calved: 14.10.17 (24 mths) Colour: Grey

**S. JDH Modelo Manso 268/5 (Imp)**  
S. Elrose Maurice Manso  
D. PBF Sweet Bessie Manso 4

**Sire: ELROSE 11606**

S. Lancefield A Ratio 1820  
D. Elrose Kate 8646  
D. Elrose Kate 5699

**S. JDH Palestimo R Manso (Imp)**  
S. Elrose Pal Joey  
D. Elrose Spotlight

**Dam: ELROSE 8703**

S. FBC D Major De Manso  
D. Elrose 6294  
D. Elrose 3772



200 DAY WT.	400 DAY WT.	600 DAY WT.	CARCASE WT.	EMA SQCM	RBV %	JAP OX INDEX	LIVE EXPORT INDEX
+26 69%	+31 73%	+44 76%	+28 59%	+2.9 45%	+0.9 34%	\$+15	\$+13

\$

## LOT 83 ELROSE EPPING 16221 (POLL)

H.B. ELR16221M(REG) Calved: 06.12.17 (22 mths) Colour: Grey

**S. JME Mr Esto 28 (Imp) (P)**  
S. Clukan Esto Power 223/1 (P)  
D. Clukan Edwina 073

**Sire: ELROSE EPIC (P)**

S. Lancefield Signature 9153  
D. Elrose Chelsea 5464  
D. PBF Chelsea Manso  
S. Lancefield Signature 9153  
S. Elrose Trademark (Sc)  
D. Elrose Ghost Gum 6th

**Dam: ELROSE 9806 (P)**

S. PBF McCulloch Manso  
D. Elrose Megan 7453 (P)  
D. Elrose 4085 (P)



200 DAY WT.	400 DAY WT.	600 DAY WT.	CARCASE WT.	EMA SQCM	RBV %	JAP OX INDEX	LIVE EXPORT INDEX
+20 64%	+32 60%	+30 60%	+23 50%	+3.7 40%	+1.5 31%	\$+17	\$+16

\$

## LOT 84 ELROSE MARKO MANSO 16612

H.B. ELR16612M(REG) Calved: 15.10.17 (24 mths) Colour: Grey

S. JDH Atlas Manso 328/3  
**S. JDH Modelo Manso 268/5 (Imp)**  
D. JDH Lady Manso 930/2

**Sire: ELROSE MARCELLO MANSO 8565**

**S. SMG Monumental (Imp)**  
D. Elrose Spring Time 6230  
D. Elrose Spring Time 4485

**S. JDH Palestimo R Manso (Imp)**  
S. PBF Dracula Manso 427/5  
D. FBC F Lady Drake Manso

**Dam: ELROSE 6916**

S. Elrose Committment  
D. Elrose 4641  
D. Elrose 1922 (P)



200 DAY WT.	400 DAY WT.	600 DAY WT.	CARCASE WT.	EMA SQCM	RBV %	JAP OX INDEX	LIVE EXPORT INDEX
+26 70%	+30 74%	+47 76%	+30 60%	+0.7 47%	+0.7 36%	\$+18	\$+16

**Dam** 5 calves @ 388 dci.

\$

## LOT 85 ELROSE LATRELLE 16520

H.B. ELR16520M(REG) Calved: 16.10.17 (24 mths) Colour: Grey

**S. JDH Mr Liberty Manso 166 (Imp)**  
S. Tartrus Lucas Manso 5474  
D. Tartrus Libby Manso 5260

**Sire: ELROSE LUCAS 8856**

S. Lancefield Armada 8215  
D. Elrose Grey Lisa 3735  
D. Elrose Grey Lisa 1940  
S. FBC D Mr Arnie Manso  
S. FBC D Terminator Manso 899D  
D. FBC D Miss Suzie Manso 678D

**Dam: ELROSE GHOST GUM 8827**

S. Yenda V 49/5  
D. Elrose Ghost Gum 6161  
D. Elrose Ghost Gum 4467



200 DAY WT.	400 DAY WT.	600 DAY WT.	CARCASE WT.	EMA SQCM	RBV %	JAP OX INDEX	LIVE EXPORT INDEX
+22 70%	+33 74%	+42 77%	+29 61%	+2.3 47%	+0.5 36%	\$+21	\$+17

**Dam** 4 calves @ 442 dci.

\$

A/c 2AM Stud, Barwon Park, Dingo.

## LOT 86 2AM ENDEAVOUR 6686

H.B. 2AM6686M(REG) Calved: 10.01.18 (21 mths) Colour: Grey

**S. JDH Mr Echo Manso (Imp)**  
S. Lancefield A Ecstrata 2303  
D. Lancefield A Meryl 1306

**Sire: 2AM EXCALIBUR 4361M**

S. Lancefield A Mr Adonis Manso 2163  
D. Lancefield A Ms Ward 3253  
D. Lancefield A Ms Ward 1808  
S. JDH Sir Liberty Manso 847/5

**S. JDH Rick Manso (Imp)**

D. JDH Lady Remi 6 Manso

**Dam: LANCEFIELD A LADY TONIKA 3224**

S. Lancefield A Sir Rivoli Manso  
D. Lancefield A Tonika 2127  
D. Lancefield A Tonika 1068



200 DAY WT.	400 DAY WT.	600 DAY WT.	CARCASE WT.	EMA SQCM	RBV %	JAP OX INDEX	LIVE EXPORT INDEX
+31 68%	+40 66%	+60 64%	+36 54%	+4.5 35%	+1.3 32%	\$+28	\$+23

**Notes:** A young January prospect to mark down for inspection. He'll make a Sire! Endeavour is very correct, long bodied, beautiful hindquarter bull of quiet nature. Excellent sheath and testicles as well. His sire does a fantastic job for our Stud producing sale bull after sale bull consistently, and his damline is one of our highest quality. Pedigree, performance and exciting potential available here. Don't miss him.

**Dam** a donor 15 calves inc. 7 natural; **Granddam** a donor 10 calves inc. 5 natural.

\$

**LOT 87 2AM ELIAS 6662**

H.B. 2AM6662M(REG) Calved: 16.01.18 (21 mths) Colour: Grey

**S. JDH Mr Echo Manso (Imp)**

S. Lancefield A Ecstrata 2303

D. Lancefield A Meryl 1306

**Sire: 2AM EXCALIBUR 4361M**

S. Lancefield A Mr Adonis Manso 2163

D. Lancefield A Ms Ward 3253

D. Lancefield A Ms Ward 1808

S. Lancefield A Nitrate 2389 (Sc)

S. Lancefield A Nazareth 3625 (P)

D. Lancefield A Melba 2431

**Dam: 2AM TONIKA 4657**

S. Lancefield A Sir Rivoli Manso

D. Lancefield A Tonika 2127

D. Lancefield A Tonika 1068



200 DAY WT.	400 DAY WT.	600 DAY WT.	CARCASE WT.	EMA SQCM	RBY %	JAP OX INDEX	LIVE EXPORT INDEX
+27 67%	+35 63%	+49 62%	+31 51%	+3.8 33%	+1.0 29%	\$+20	\$+16

**Dam** 3 calves @ 380 dci.; **Granddam** a donor 10 calves inc. 5 nautral.

\$

**LOT 88 2AM ELIJAH 6685**

H.B. 2AM6685M(REG) Calved: 10.01.18 (21 mths) Colour: Grey

**S. JDH Mr Echo Manso (Imp)**

S. Lancefield A Ecstrata 2303

D. Lancefield A Meryl 1306

**Sire: 2AM EXCALIBUR 4361M**

S. Lancefield A Mr Adonis Manso 2163

D. Lancefield A Ms Ward 3253

D. Lancefield A Ms Ward 1808

S. Lancefield A Colossimo 1206 (P)

S. Lancefield A Titon 3187 (P)

D. Lancefield A Meryl Manso 1354

**Dam: 2AM ABERGAIL 4711**

S. Lancefield A Nitrate 2389 (Sc)

D. Lancefield A Abergail 3645

D. Lancefield A Abergail 2217



200 DAY WT.	400 DAY WT.	600 DAY WT.	CARCASE WT.	EMA SQCM	RBY %	JAP OX INDEX	LIVE EXPORT INDEX
+35 66%	+47 62%	+70 62%	+39 51%	+4.7 32%	+1.3 28%	\$+34	\$+30

**Dam** 2 calves @ 391 dci.

\$

**LOT 89 2AM EMILIO 6666 (POLL)**

H.B. 2AM6666M(REG) Calved: 16.01.18 (21 mths) Colour: Grey

**S. JDH Mr Echo Manso (Imp)**

S. Lancefield A Ecstrata 2303

D. Lancefield A Meryl 1306

**Sire: 2AM EXCALIBUR 4361M**

S. Lancefield A Mr Adonis Manso 2163

D. Lancefield A Ms Ward 3253

D. Lancefield A Ms Ward 1808

**S. JDH Dynasty Manso 30/1 (Imp)**

S. Lancefield D Doncaster 2771/D (Sc)

D. Lancefield D Marina 476/D (Sc)

**Dam: LANCEFIELD A RENEE 3746 (P)**

S. Lancefield Buster Manso 3253

D. Lancefield A Lady Renee 2596

D. Lancefield A Lady Renee Manso 1517



200 DAY WT.	400 DAY WT.	600 DAY WT.	CARCASE WT.	EMA SQCM	RBY %	JAP OX INDEX	LIVE EXPORT INDEX
+29 66%	+38 63%	+60 62%	+35 52%	+3.8 34%	+1.0 30%	\$+37	\$+33

**Dam** 6 calves @ 378 dci. **Granddam** 8 calves @ 411 dci.

\$

**LOT 90 2AM CAIRO 6660**

H.B. 2AM6660M(REG) Calved: 15.01.18 (21 mths) Colour: Grey

**S. BNA Double Take Manso (Imp)**

S. Lancefield A Colossimo 1206 (P)

D. Lancefield Maisey 8346 (P)

**Sire: LANCEFIELD A CAMPAIGN 3805M (SC)****S. JDH Sir Reno Manso (Imp)**

D. Lancefield A Meryl Manso 1354

D. Lancefield Meryl Manso 9208

S. Elrose Kody Man

S. Chasmac Park Jo Manso 131

D. FBC D Miss Bonny Jo Manso 779D

**Dam: 2AM LADY REM MANSO 4741****S. JDH Beckton De Manso (Imp)**

D. Lancefield A Lady Rem Manso 3357

D. Lancefield A Lady Rem Manso 2307



200 DAY WT.	400 DAY WT.	600 DAY WT.	CARCASE WT.	EMA SQCM	RBY %	JAP OX INDEX	LIVE EXPORT INDEX
+31 63%	+41 58%	+54 55%	+36 47%	+3.7 30%	+1.0 27%	\$+18	\$+13

**Notes:** Cairo is another of our January drop; young sire prospects of immense appeal. A blue grey of good pigment and good head. Full through the body into a lovely square hindquarter, his exceptional combination of breed and beef attributes is on show at an early age. There's a lot to recommend this bull, put him on your inspection list. (Old needle lump near side shoulder – no problem).

**Dam** 3 calves @ 357 dci. **Granddam** 6 calves @ 384 dci.

\$

**LOT 91 2AM ENRIQUE 6661**

H.B. 2AM6661M(REG) Calved: 16.01.18 (21 mths) Colour: Grey

**S. JDH Mr Echo Manso (Imp)**

S. Lancefield A Ecstrata 2303

D. Lancefield A Meryl 1306

**Sire: LANCEFIELD A ESCAPADE 3914M**

S. Lancefield A Brosnan 319/70

D. Lancefield A Relana 834

D. Lancefield Relana 9444

S. Lancefield A Colossimo 1206 (P)

S. Lancefield A Columbus 2138 (P)

D. Lancefield A Brancha 843

**Dam: 2AM MATILDA 4784**

S. Lancefield Lofty Manso 9545

D. Lancefield Snow Queen 2351

D. Lancefield Snow Queen 1281



200 DAY WT.	400 DAY WT.	600 DAY WT.	CARCASE WT.	EMA SQCM	RBY %	JAP OX INDEX	LIVE EXPORT INDEX
+21 66%	+26 62%	+41 62%	+22 50%	+3.2 30%	+0.6 28%	\$+21	\$+18

**Dam** 3 calves @ 380 dci. **Granddam** 7 calves @ 372 dci.

\$

A/c Lancefield Stud, Lancefield, Dululu.

**LOT 92 LANCEFIELD S ASHTON 5786/1**

H.B. LAS5786/1M(REG) Calved: 28.12.17 (22 mths) Colour: Grey

S. Carinya Jake 7/1458

S. Elrose Jacob (P)

D. Elrose Sabrina 6175 (P)

**Sire: ELROSE GILLET (P)**

S. Elrose Trademark (Sc)

D. Elrose Lady Steam Manso 6679

D. PBF Lady Steam Manso 547/5

**S. JDH Mr Echo Manso (Imp)**

S. Lancefield Elgin Manso 3875/1

D. Lancefield Meryl Lyn Manso 3403

**Dam: LANCEFIELD S MERYL LOU 5351/1**

S. Lancefield Buster Manso 3253

D. Lancefield S Meryl Lou 4579/1

D. Lancefield Meryl Lou 2687



200 DAY WT.	400 DAY WT.	600 DAY WT.	CARCASE WT.	EMA SQCM	RBY %	JAP OX INDEX	LIVE EXPORT INDEX
+33 65%	+46 64%	+64 73%	+39 54%	+5.7 44%	+1.4 29%	\$+45	\$+42

**Notes:** Ashton leads an impressive pen of young sire prospects – all by Elrose Gillett, a sire we purchased at the Big Country Sale for \$23,000. He's a high quality bull with strong breed character and head. Great length on him and eye catching softness that is so desirable.

**Dam** 1st calf; **Granddam** 4 calves @ 342 dci.

\$



**LOT 93 LANCEFIELD S ARCHER 5787/1 (SCURRS)**

H.B. LAS5787/1M(REG) Calved: 25.02.18 (20 mths) Colour: Grey

S. Carinya Jake 7/1458  
 S. Elrose Jacob (P)  
 D. Elrose Sabrina 6175 (P)

**Sire: ELROSE GILLETT (P)**

S. Elrose Trademark (Sc)  
 D. Elrose Lady Steam Manso 6679  
 D. PBF Lady Steam Manso 547/5  
 S. Lancefield S Kingston 3644/1 (P)  
 S. Lancefield S Kedron 4344/1 (P)  
 D. Lancefield Abergail 3246

**Dam: LANCEFIELD S MERYL 5424/1 (P)**

S. Lancefield M Revelry Manso  
 D. Lancefield S Meryl Manso 4341/1  
 D. Lancefield S Meryl 3612



200 DAY WT.	400 DAY WT.	600 DAY WT.	CARCASE WT.	EMA SQCM	RBV %	JAP OX INDEX	LIVE EXPORT INDEX
+28 63%	+36 61%	+60 67%	+30 50%	+2.6 37%	+0.9 26%	\$+28	\$+23

**Notes:** A deep, square, soft easy doing young Gillett son that stands on good bone.**Dam** 2 calves @ 325 dci. **Granddam** 3 calves @ 399 dci. **Great Granddam** 7 calves @ 463 dci.

\$

**LOT 94 LANCEFIELD S BOULIA 5784/1**

H.B. LAS5784/1M(REG) Calved: 28.12.17 (22 mths) Colour: Grey

S. Carinya Jake 7/1458  
 S. Elrose Jacob (P)  
 D. Elrose Sabrina 6175 (P)

**Sire: ELROSE GILLETT (P)**

S. Elrose Trademark (Sc)  
 D. Elrose Lady Steam Manso 6679  
 D. PBF Lady Steam Manso 547/5

**S. JDH Mr Echo Manso (Imp)**

S. Lancefield Whistler Manso 4067/1  
 D. Lancefield Meryl Lyn Manso 3403

**Dam: LANCEFIELD S AMELIA 5322/1 (P)****S. JDH Sir Reno Manso (Imp)**

D. Lancefield Amelia 4419/1 (P)  
 D. Lancefield Amelia 3744 (P)



200 DAY WT.	400 DAY WT.	600 DAY WT.	CARCASE WT.	EMA SQCM	RBV %	JAP OX INDEX	LIVE EXPORT INDEX
+40 65%	+53 64%	+84 73%	+46 53%	+4.8 41%	+1.3 29%	\$+50	\$+44

**Notes:** Showing similar, valuable features of his mates, Boulia has excellent temperament, good depth of body and a strong constitution.**Dam** 1st calf; **Granddam** 5 calves.

\$

**LOT 95 LANCEFIELD S GATTON 5789/1 (POLL)**

H.B. LAS5789/1M(REG) Calved: 12.01.18 (21 mths) Colour: Grey

S. Carinya Jake 7/1458  
 S. Elrose Jacob (P)  
 D. Elrose Sabrina 6175 (P)

**Sire: ELROSE GILLETT (P)**

S. Elrose Trademark (Sc)  
 D. Elrose Lady Steam Manso 6679  
 D. PBF Lady Steam Manso 547/5  
 S. Lancefield S Kingston 3644/1 (P)  
 S. Lancefield S Kedron 4344/1 (P)  
 D. Lancefield Abergail 3246

**Dam: LANCEFIELD S CONNIE 5423/1 (P)**

S. Lancefield Madigan Manso 1845  
 D. Lancefield S Connie 4360/1  
 D. Lancefield Connie 1598



200 DAY WT.	400 DAY WT.	600 DAY WT.	CARCASE WT.	EMA SQCM	RBV %	JAP OX INDEX	LIVE EXPORT INDEX
+37 64%	+50 63%	+67 73%	+41 52%	+2.6 36%	+0.9 26%	\$+51	\$+45

**Notes:** This is a young poll sire of real promise and he won't be 2yo until January! Bone and body, a lovely looseness of skin, soft finish and quiet disposition. He'll make a positive impact in the herds looking for poll influence, so give him a good inspection.**Dam** 2 calves @ 365 dci. **Granddam** 5 calves @ 378 dci. **Great Granddam** 9 calves @ 412 dci.

\$

**LOT 96 LANCEFIELD S TEDESCO 5794/1**

H.B. LAS5794/1M(REG) Calved: 24.04.18 (18 mths) Colour: Grey

S. Lancefield S Kingston 3644/1 (P)  
 S. Lancefield S Kedron 4344/1 (P)  
 D. Lancefield Abergail 3246

**Sire: LANCEFIELD S TALLADEGA 5282/1 (P)****S. JDH Sir Reno Manso (Imp)**

D. Lancefield S Kathryn 4283/1  
 D. Lancefield Kathryn 2445  
 S. Lancefield Kinsman Manso 8950  
 S. Lancefield S Kingston 3644/1 (P)  
 D. Lancefield S Cherie Brancha 2183/1

**Dam: LANCEFIELD S LADY 4641/1**

S. Lancefield Dudley Manso 2319  
 D. Lancefield S Lady 3696  
 D. Lancefield S Lady 1110



200 DAY WT.	400 DAY WT.	600 DAY WT.	CARCASE WT.	EMA SQCM	RBV %	JAP OX INDEX	LIVE EXPORT INDEX
+37 66%	+44 64%	+64 71%	+39 54%	+4.8 37%	+1.2 28%	\$+28	\$+21

**Notes:** Again, Tedesco carries a high recommendation as a young poll sire prospect of obvious value to the beef industry. At his young age, with his length, strong natural muscle pattern, great fullness of flank, width across the loin and down the topline, and easy doing softness, he is furnishing into a beef performance powerhouse! In the paddock he won't miss an opportunity to score points, just like his namesake.**Dam** 6 calves @ 389 dci.

\$

**LOT 97 LANCEFIELD S COOK 5782/1 (POLL)**

H.B. LAS5782/1M(REG) Calved: 27.12.17 (22 mths) Colour: Grey

S. Carinya Jake 7/1458  
 S. Elrose Jacob (P)  
 D. Elrose Sabrina 6175 (P)

**Sire: ELROSE GILLETT (P)**

S. Elrose Trademark (Sc)  
 D. Elrose Lady Steam Manso 6679  
 D. PBF Lady Steam Manso 547/5  
 S. Lancefield S Kingston 3644/1 (P)  
 S. Lancefield S Dutton 4666/1 (P)  
 D. Lancefield S Lucille 4040/1

**Dam: LANCEFIELD S TURBO 5379/1 (P)**

S. Lancefield S Buchanan 4281/1  
 D. Lancefield S Playpen 4833/1  
 D. Lancefield S Playpen 4289/1



200 DAY WT.	400 DAY WT.	600 DAY WT.	CARCASE WT.	EMA SQCM	RBV %	JAP OX INDEX	LIVE EXPORT INDEX
+25 65%	+33 63%	+33 73%	+26 52%	+2.1 39%	+0.7 27%	\$+15	\$+12

**Dam** 1st calf; **Granddam** 5 calves @ 350 dci.

\$

**LOT 98 LANCEFIELD S DUSTY 5788/1 (POLL)**

H.B. LAS5788/1M(REG) Calved: 16.02.18 (20 mths) Colour: Grey

S. Carinya Jake 7/1458  
 S. Elrose Jacob (P)  
 D. Elrose Sabrina 6175 (P)

**Sire: ELROSE GILLETT (P)**

S. Elrose Trademark (Sc)  
 D. Elrose Lady Steam Manso 6679  
 D. PBF Lady Steam Manso 547/5

**S. JDH Baxter Manso 33/1 (Imp)**

S. Lancefield Buster Manso 3253  
 D. Lancefield Mary Lou Manso 1897

**Dam: LANCEFIELD S RITA 5333/1 (SC)**

S. Lancefield S Kingston 3644/1 (P)  
 D. Lancefield S Rita 4693/1 (P)  
 D. Lancefield Rita 9793



200 DAY WT.	400 DAY WT.	600 DAY WT.	CARCASE WT.	EMA SQCM	RBV %	JAP OX INDEX	LIVE EXPORT INDEX
+36 65%	+51 64%	+59 73%	+39 53%	+3.2 41%	+1.0 30%	\$+35	\$+30

**Dam** 2 calves @ 354 dci. **Granddam** 6 calves @ 361 dci. **Great Granddam** 9 calves @ 403 dci.

\$



A/c Lancefield M Stud, Eulogie, Dululu.

## LOT 99 LANCEFIELD M RIFLEMAN 5960/M

H.B. LAM5960/MM(REG) Calved: 20.09.17 (25 mths) Colour: Grey

S. JDH Prescott Manso 82/6

**S. JDH Sir Reno Manso (Imp)**

D. JDH Lady Ly Manso

**Sire: LANCEFIELD M ROMEO MANSO 1790/M**

S. JDH Datapack Manso

**D. JDH Lady Robin Manso (Imp)**

D. JDH Lady Selim Manso

S. Lancefield M High Tech 384/M

S. Lancefield M Hamilton Manso 2104/M

D. Lancefield M Shanoa Manso 802/M

**Dam: LANCEFIELD M LINDA 2660/M**

S. Lancefield M Ice 114/M

D. Lancefield M Linda 1269/M

D. Lancefield M Linda 263/M

200 DAY WT.	400 DAY WT.	600 DAY WT.	CARCASE WT.	EMA SQCM	RBY %	JAP OX INDEX	LIVE EXPORT INDEX
+28 67%	+33 65%	+46 67%	+27 58%	+5.5 52%	+1.0 37%	\$+19	\$+17

**Notes:** Rifleman is a high quality young bull with bone, beef & breed characteristics of huge appeal. Quiet temperament & carrying an excellent muscle pattern. He's a natural easy doer. Good testicles & broad across the backline as well Give this smart Romeo son, late in the catalogue, a good inspection.

**Dam** 4 calves @ 449 dci. **Granddam** 6 calves @ 371 dci.

\$

## LOT 100 LANCEFIELD M EVEREST 5915/M

H.B. LAM5915/MM(REG) Calved: 22.09.17 (25 mths) Colour: Grey

**S. JDH Mr Echo Manso (Imp)**

S. Lancefield M Editor Manso 1978/M

D. Lancefield M Shanoa Manso 802/M

**Sire: LANCEFIELD M EGUCHI 3967/M**

S. PBF Oryon Manso 939/7

D. Lancefield M Miss Shanoa 2212/M

D. Lancefield M Shanoa Dream 210/M

**S. JDH Sir Paul Manso (Imp)**

S. Lancefield M Pedrosa Manso 3102/M

D. Lancefield M Shanoa Manso 214/M

**Dam: LANCEFIELD M RITA 3485/M**

S. Lancefield M High Tech 384/M

D. Lancefield M Rita 1491/M

D. Lancefield Rita 6912

200 DAY WT.	400 DAY WT.	600 DAY WT.	CARCASE WT.	EMA SQCM	RBY %	JAP OX INDEX	LIVE EXPORT INDEX
+19 66%	+25 61%	+31 64%	+22 52%	+3.0 41%	+0.8 30%	\$+8	\$+6

**Notes:** Everest is a long, square and full bodied bull that will catch the eye of discerning beef producers. Excellent smooth muscling on him, big hindquarter, great ribspring, good sheath and straight and strong along the topline. He is highly credentialled to produce quality calves of high performance. Highlight him for your inspection.

**Dam** 2 calves @ 445 dci. **Granddam** 7 calves @ 427 dci.

\$

## LOT 101 LANCEFIELD M EXCEL 5921/M

H.B. LAM5921/MM(REG) Calved: 26.09.17 (25 mths) Colour: Grey

**S. JDH Mr Echo Manso (Imp)**

S. Lancefield M Editor Manso 1978/M

D. Lancefield M Shanoa Manso 802/M

**Sire: LANCEFIELD M EGUCHI 3967/M**

S. PBF Oryon Manso 939/7

D. Lancefield M Miss Shanoa 2212/M

D. Lancefield M Shanoa Dream 210/M

S. JDH Mr Bremser Manso

**S. JDH Cutler De Manso 816/7 (Imp)**

D. JDH Beyla Manso

**Dam: LANCEFIELD M CLOTILDE 3427/M**

S. Lancefield M Romeo Manso 1790/M

D. Lancefield M Clotilde 2463/M

D. Lancefield M Clotilde 1676/M

200 DAY WT.	400 DAY WT.	600 DAY WT.	CARCASE WT.	EMA SQCM	RBY %	JAP OX INDEX	LIVE EXPORT INDEX
+27 66%	+41 61%	+50 63%	+35 51%	+3.2 39%	+1.3 29%	\$+19	\$+15

**Dam** 2 calves @ 372 dci. **Granddam** 4 calves @ 641 dci.

\$

## LOT 102 LANCEFIELD M RICHIE 6177/M

H.B. LAM6177/MM(REG) Calved: 03.09.17 (25 mths) Colour: Grey

S. JDH Prescott Manso 82/6

**S. JDH Sir Reno Manso (Imp)**

D. JDH Lady Ly Manso

**Sire: LANCEFIELD M ROMEO MANSO 1790/M**

S. JDH Datapack Manso

**D. JDH Lady Robin Manso (Imp)**

D. JDH Lady Selim Manso

S. JDH Remington Manso 784/2

**S. JDH Mr Manso 537/9 (Imp)**

D. JDH Lady Manso 626/7F

**Dam: LANCEFIELD M MS WARD 2818/M**

S. PBF Oryon Manso 939/7

D. Lancefield M Ms Ward 2217/M

D. Lancefield M Ms Ward 694/M

200 DAY WT.	400 DAY WT.	600 DAY WT.	CARCASE WT.	EMA SQCM	RBY %	JAP OX INDEX	LIVE EXPORT INDEX
+25 66%	+30 64%	+38 65%	+27 58%	+5.1 52%	+1.0 38%	\$+8	\$+4

**Dam** 2 calves; **Granddam** 3 calves @ 393 dci.

\$

## LOT 103 LANCEFIELD M LAWMAN 5929/M (SCURRS)

H.B. LAM5929/MM(REG) Calved: 13.09.17 (25 mths) Colour: Grey

S. JDH Saltillo Manso

**S. JDH Hawk Manso 666/5 (Imp)**

D. JDH Lady Manso 930/2

**Sire: FBC LOCK MANSO 683/1**

**S. JDH Nieto De Manso 646/3 (Imp)**

D. FBC D Miss Jess De Manso 892D

D. FBC D Miss Jess De Manso 428D

S. PBF Oryon Manso 939/7

S. Lancefield M Oregon 2969/M (P)

D. Lancefield Molly 9478 (P)

**Dam: LANCEFIELD M ERMINE 3224/M**

S. Lancefield Magician 1026

D. Lancefield M Ermine 1667/M

D. Lancefield M Ermine 1062/M

200 DAY WT.	400 DAY WT.	600 DAY WT.	CARCASE WT.	EMA SQCM	RBY %	JAP OX INDEX	LIVE EXPORT INDEX
+29 64%	+35 57%	+42 59%	+31 48%	+3.6 35%	+0.8 25%	\$+1	\$-4

**Notes:** You'll like this naturally well muscled, broad topped young bull – he's all carcass quality. An easy doing type with a big, square, deep hindquarter; he carries all the attributes needed for high level beef industry performance. There will be value in Lawman for astute bidders and buyers close to the end of the Sale.

**Dam** 2 calves @ 392 dci. **Granddam** 3 calves @ 389 dci.

\$

## LOT 104 LANCEFIELD M REXTON 5959/M (SCURRS)

H.B. LAM5959/MM(REG) Calved: 26.08.17 (26 mths) Colour: Grey

S. JDH Prescott Manso 82/6

**S. JDH Sir Reno Manso (Imp)**

D. JDH Lady Ly Manso

**Sire: LANCEFIELD M ROMEO MANSO 1790/M**

S. JDH Datapack Manso

**D. JDH Lady Robin Manso (Imp)**

D. JDH Lady Selim Manso

**S. JDH Mr Brooks Manso (Imp)**

S. Lancefield M Billionaire Manso 1377/M

D. Lancefield M Shanoa Manso 214/M

**Dam: LANCEFIELD M SENORA 2812/M**

S. PBF Oryon Manso 939/7

D. Lancefield M Senora 2215/M

D. Lancefield M Senora 9627

200 DAY WT.	400 DAY WT.	600 DAY WT.	CARCASE WT.	EMA SQCM	RBY %	JAP OX INDEX	LIVE EXPORT INDEX
+28 66%	+37 64%	+45 65%	+30 57%	+4.7 52%	+0.9 37%	\$+25	\$+22

**Dam** 4 calves @ 530 dci. **Granddam** 6 calves @ 440 dci.

\$

**LOT 105 LANCEFIELD M EVERETT 5797/M**

H.B. LAM5797/MM(REG) Calved: 22.10.17 (24 mths) Colour: Grey

**S. JDH Mr Echo Manso (Imp)**

S. Lancefield M Editor Manso 1978/M

D. Lancefield M Shanoa Manso 802/M

**Sire: LANCEFIELD M EGUCHI 3967/M**

S. PBF Oryon Manso 939/7

D. Lancefield M Miss Shanoa 2212/M

D. Lancefield M Shanoa Dream 210/M

S. Lancefield M Blade 2192/M

S. Lancefield M Bondi 3588/M

D. Lancefield M Mirane 1041/M

**Dam: LANCEFIELD M JOANNE 3431/M**

S. Lancefield M Buntine 1759

D. Lancefield M Joanne 2455/M

D. Lancefield M Joanne 488/M



200 DAY WT.	400 DAY WT.	600 DAY WT.	CARCASE WT.	EMA SQCM	RBV %	JAP OX INDEX	LIVE EXPORT INDEX
+20 65%	+26 60%	+35 62%	+25 51%	+2.2 38%	+0.6 28%	\$+0	\$-3

**Dam** 1st calf; **Great Granddam** 7 calves.

\$

**LOT 106 LANCEFIELD M LEROY 5768/M**

H.B. LAM5768/MM(REG) Calved: 02.11.17 (23 mths) Colour: Grey

S. JDH Saltillo Manso

**S. JDH Hawk Manso 666/5 (Imp)**

D. JDH Lady Manso 930/2

**Sire: FBC LOCK MANSO 683/1****S. JDH Nieto De Manso 646/3 (Imp)**

D. FBC D Miss Jess De Manso 892D

D. FBC D Miss Jess De Manso 428D

**S. JDH Sir Paul Manso (Imp)**

S. Lancefield M Pedrosa Manso 3102/M

D. Lancefield M Shanoa Manso 214/M

**Dam: LANCEFIELD M REIZ 3093/M**

S. Lancefield M Racketeer Manso 1794/M

D. Lancefield M Reiz 2260/M

D. Lancefield M Reiz 666/M



200 DAY WT.	400 DAY WT.	600 DAY WT.	CARCASE WT.	EMA SQCM	RBV %	JAP OX INDEX	LIVE EXPORT INDEX
+26 63%	+30 59%	+39 60%	+28 49%	+2.9 38%	+0.8 27%	\$+7	\$+3

**Dam** 3 calves @ 372 dci. **Great Granddam** 5 calves @ 364 dci.

\$

**SALE RESULTS 2019**

NO.	DESCRIPTION	GROSS	AVERAGE	TOP
	Registered Brahman Bulls			
	Herd Brahman Bulls			
	<b>TOTAL</b>			

**LANCEFIELD BRAHMAN'S**  
*Invitation Sale*

Thank you for attending our  
Sale in 2019.  
We appreciate your support.

*Post Sale  
Refreshments*

**Following** the Sale, which we expect to conclude around lunchtime,  
the Sale Vendors invite Buyers and Bidders to join them at the  
Gracemere Hotel for post Sale refreshments.

**BUYERS**

Please complete your written **Buyers Instruction Sheet** and submit it to the Sale Day Office immediately following the sale so that delivery of your sale purchases can be organised in the most efficient, careful, speedy and cost effective way for you.

## STUD STOCK — AUCTION TERMS AND CONDITIONS OF SALE

**IMPORTANT NOTICE: All bids shall be treated as offers made upon the following Terms and Conditions of Sale and all persons present are admitted to attend the sale on the basis that they have notice of these Terms and Conditions.**

1. The highest bidder shall, subject to Condition 2, be the Purchaser provided that the Vendor reserves the right to bid either by himself or through his Agent or Auctioneer and should any dispute arise among the bidders for any lot, during or immediately after the sale of the lot, it shall be settled at the Auctioneer's absolute discretion who may, should one of the disputants advance, put the lot or lots up again. The bidding from time to time shall be regulated by the Auctioneer and no bid shall be retracted.
2. The sale will be conducted on a "Sale" or "No Sale" basis whereby the lot for sale shall be knocked down to the highest bidder, but the sale will be subject to the acceptance of the highest bid by the Vendor who will immediately after the fall of the hammer declare "Sale" or "No Sale". Should the Vendor reject the bid of the highest bidder such bidder will have the right of first refusal of the lot at the Vendor's nominated price for one hour after the lot has been passed out of the ring on the Terms and Conditions herein set forth in so far as they shall apply.
3. The details of the Purchaser, the purchase price and the lot sold as recorded by the sale clerk for and on behalf of the Auctioneer shall be equally binding on both Purchaser and Vendor.
4. The Auctioneer expressly reserves the right, without giving any reasons therefore, to:
  - (a) Refuse to acknowledge any bid;
  - (b) Withdraw any lot or lots before or during the sale;
  - (c) Exclude any person from the auction venue should it think fit.
5. Each lot in all cases shall be at the risk and expense of the Purchaser upon acceptance of his bid by the Vendor or upon acceptance of the highest bidder's offer by the Vendor whichever shall be the earlier.
6. Except as expressly provided in these Terms and Conditions of Sale no guarantee or warranty shall be given in respect of any lot sold under these Conditions as to pedigree, sex, age, breeding condition or otherwise howsoever, and no guarantee, warranty or condition whatsoever shall be implied from any affirmation made before or at the time of the sale, or from any circumstances of the sale, but in all cases where a guarantee is intended the same shall attach and be enforceable only if reduced to writing before delivery of the lot and signed by the Vendor or by the Auctioneer acting as agent for the Vendor, and the absence of such writing shall be conclusive evidence in case of dispute that no guarantee, warranty or condition whatsoever was given or implied.
7. In the event of any dispute in respect to the sale of any lot:
  - (i) The Purchaser shall nevertheless be obliged to pay to the Auctioneer the full purchase price and any other monies or interest payable by the Purchaser in accordance with these terms and conditions;
  - (ii) The Vendor and the Purchaser shall resolve the dispute between themselves;
  - (iii) The Auctioneer shall have no liability or responsibility in regard to the dispute; and
  - (iv) No lot shall be returned to the Auctioneer and the Purchaser shall indemnify the Auctioneer for all costs, expenses and damages which the Auctioneer is put to or incurs by reason of the Purchaser so doing.
8. The name of the Vendor for whom the Auctioneer acts is acknowledged to have been furnished to Purchasers prior to the sale and further particulars will in all cases be furnished to a Purchaser if required. In the case of any disputes the remedy of the Purchaser shall be against the Vendor only and in no case or under any circumstances against the Auctioneer who is to be regarded for all intents and purposes as agent for a disclosed principal.
9.
  - (a) **PAYMENT** — Unless prior credit arrangements have been made in writing with the Auctioneer the full purchase price for each lot shall be due and payable to the Auctioneer in cash upon acceptance of the highest bid or the highest bidder's offer by the Vendor and prior to delivery. Notwithstanding that delivery is given to or possession obtained by the purchaser or his representative prior to the payment of the purchase money in full the property in any lot which is sold shall not pass to the Purchaser until the full purchase price and all cheques, promissory notes, bills of exchange, acceptance orders or drafts given in connection with such payment have been paid and liquidated, and until property shall pass, the Purchaser shall hold such lot as bailee, provided that in all cases should such payment not have been made and liquidated within 14 days of the date of the sale the Auctioneer reserves the right to:—
    - (i) Rescind the contract on behalf of the Vendor and repossess and resell any lot;
    - (ii) Recover from the Purchaser interest upon the purchase price at a rate per annum which aggregates the AMBA Bill Rate plus two percentum. For the purposes of this condition, the expression "the AMBA Bill Rate" is the rate published by the Australian Merchant Bankers Association in good faith as at the date of the sale as its bill rate for 180 day bills of exchange expressed as a percentage per annum. If at any time the AMBA Bill Rate becomes unavailable for any reason, the Auctioneer shall determine and advise the Purchaser of the interest rate to apply for the purposes of this condition.
  - (b) The Auctioneer is selling as the del credere agent of the Vendor and the full purchase price of any lot sold shall be payable by the Purchaser to the Auctioneer and be fully recoverable by the Auctioneer in its own name.
10. If the Purchaser shall neglect or fail to comply with any of the within conditions, any lot purchased by him may be immediately resold by public auction or private contract, with or without notice, at the risk of the former Purchaser, who will be held responsible for all loss and expenses arising out of such resale, and shall not participate in any profit accruing therefrom.
11. Any Vendor or Purchaser removing the sale number from any lot after it has been sold will fully indemnify all affected parties for any loss, costs or damage should the lot be wrongly delivered.
12. The Purchasers, if any more than one, shall be jointly and severally bound by these Terms and Conditions, and shall jointly and severally carry out and perform same.
13. Any person who advances a bid on a lot shall do so on the expressed condition and understanding that should that person's bid be the highest bid and such bid is accepted by the Vendor, then that person will be held personally liable for the price so agreed upon, regardless of the fact that that person may be acting on behalf of another party, either disclosed or undisclosed to the Vendor or Auctioneer, provided however, that this Condition shall not in any way negate the Vendor's right to claim against any principal and in such case the bidder's liability shall be construed to be by way of guarantee.
14. The Auctioneer may, should it think fit, make arrangements on a Purchaser's behalf for the feeding, watering, trucking, shipping of and general attendance to any lot after sale but no responsibility will be accepted by the Auctioneer and all such service will be at the Purchaser's risk and expense.
15. No lot will be delivered until the sales invoice has been checked and signed by the Purchaser or his duly authorised representative.
16.
  - (a) Each lot in all cases shall be sold with all faults, if any, and excepting those conditions and warranties implied by the Trade Practices Act or any applicable State legislation which cannot be contractually excluded and excepting conditions and warranties expressly contained in these Terms and Conditions of Sale, any express or implied condition, statement of warranty, statutory or otherwise, is hereby excluded. The Auctioneer is not liable in respect of any error, misdescription or omission in any particulars appearing or stated regarding the description of pedigrees of any lot offered for sale and no such error, misdescription or omission shall entitle the Purchaser to annul the sale or reject the lot or claim any compensation, damage or abatement in price.
  - (b) Each lot will be sold subject to passing all veterinary tests required by the law of the state or country to which the Purchaser intends to transport that particular lot, such tests to be undertaken at the Purchaser's expense and concluded immediately following the sale. In the event of a lot failing to pass these tests, the sale shall be null and void, any purchase moneys paid by the Purchaser shall be refunded and property in the lot shall revert to or remain with the Vendor.

17. Guarantees of Fertility:—
  - (1) BULLS - Save and except for calves at foot, all bulls are guaranteed breeders and to so prove by the later of:
    - (a) six months after the date of sale or
    - (b) the animal reaching the age of 24 months
  - (2) FEMALES - Save and except for female calves at foot, all females are guaranteed to be in calf or go into calf by the later of:
    - (a) 6 months of the date of sale
    - (b) the animal reaching the age of 30 monthsA positive pregnancy test certified by a qualified veterinary surgeon shall be sufficient evidence that the animal is in calf.
  - (3) Claims under Clauses 17(1) and 17(2). A claim that an animal has failed to satisfy a guarantee of fertility under Clause 17(1) or 17(2) must be made to the Vendor within the relevant guarantee period but prior to the animal entering a quarantine area other than on the Vendor's property.
    - (a) All claims must be accompanied by a certificate from a registered veterinarian surgeon in accordance with the guidelines established by the Australian Association of Cattle Veterinarians which must clearly identify the basis of the claim.
    - (b) Subject to Clause 17(9), infertility resulting from injury or disease occurring after the sale of the animal is not covered by this guarantee.
    - (c) The Vendor retains the right to have the animal placed on a property nominated by him or returned to his own property for further assessment of fertility for a period not exceeding six months. If the animal proves fertile within the period such status must be confirmed by a certificate issued by a registered veterinary surgeon in accordance with the guideline established by the Australian Association of Cattle Veterinarians and costs incurred must be borne by the Purchaser. If the animal is not proven fertile within the period, the costs incurred must be borne by the Vendor.
  - (4) LIABILITY OF A VENDOR - Except for costs defined elsewhere in the conditions of sale, the liability of a Vendor in respect of claims relating to fertility shall not exceed the purchase price of the animal(s) or provide mutually agreed upon replacement animal(s).
  - (5) In the event of a claim being substantiated:
    - (a) The purchase price shall be refunded within 14 days unless a mutually agreed upon replacement animal has been provided.
    - (b) The animal/s which are the subject of the claim and any stocks of stored semen shall automatically become the property of the Vendor and be returned to him or disposed of according to his instruction at his expense.
  - (6) Subject to Clause 17(9), this guarantee is of no effect if:
    - (a) The animal is returned to the Vendor.
      - (i) In poor physical condition or with any injury;
      - (ii) Tests carried out on behalf of the Vendor within fourteen days of such return proved positive to any diseases which may affect the animal's fertility or ability to breed naturally; or
    - (b) The Purchaser has collected and stored embryos from a female.
  - (7) In the event of a dispute as to whether a lot is a breeder, such dispute shall be resolved by the Vendor and the Purchaser. The Auctioneer, while he will use his best endeavours to assist, shall have no liability or responsibility in that regard. If an animal is alleged or proved not to be a breeder, the Purchaser must nevertheless pay the Auctioneer the full purchase price and any other monies or interest payable by the Purchaser in accordance with these Terms and Conditions.
  - (8) EVIDENCE OF FERTILITY — A Certificate issued by a registered veterinary surgeon at or before the time of sale than an animal is fertile (unless it is a certificate stating in respect of a female that she is in calf at the time of sale) does not, of itself, satisfy or discharge the Vendor's obligations under the guarantee of fertility given under this Clause 17. All animals, except calves at foot, must prove their fertility within the relevant guarantee period.
  - (9) RELIEF FROM GUARANTEE — If the Vendor seeks to be relieved from the obligations which would otherwise be imposed upon him by this clause by virtue of Clauses 17(3)(b) or 17(6)(a), the onus of proof is upon the Vendor to establish that:
    - (a) The animal suffered the injury or disease or is in poor physical condition due to circumstances and events occurring after the sale, and
    - (b) The injury, disease of physical condition is the sole cause of the animal's infertility or failure to prove fertility within the guarantee period.
  - (10) DEFINITION — For the purpose of this Clause 17, the expression "guarantee period" means:
    - (a) in relation to bulls — the period specified in Clause 17(1) as being the period in which the bull must prove his fertility; and
    - (b) in relation to females — the period specified in Clause 17(2) as being the period in which the female must go into calf.
18.
  - (a) Each lot shall be at the risk of the Vendor in respect of any damage or injury, whether by disease, accident or otherwise, or whether caused by the negligence of the Auctioneer for the period that the lot be in the custody of the Auctioneer, unless such lots shall have been sold in which latter case such lot shall be at the risk of the Purchaser in all such respects.
  - (b) If any Vendor brings to the sale premises any lot which is dangerous, or infected with any disease, that Vendor shall be liable for all injury, damages, costs, losses or expenses which the Auctioneer may sustain, incur or be put to either directly or indirectly as a result of the Vendor so doing. The Auctioneer reserves the right, at its absolute discretion, to exclude from the sale, or put out of the sale venue or dispose of, any lot which in its opinion shows signs of any disease, whether infectious, contagious or not, or of any serious fault or of being dangerous.
19. DELIVERY — Except at the discretion of the Auctioneer no lot shall be delivered to the Purchaser unless payment of the purchase money together with any additional charges incurred including those expenses incurred by the Auctioneer pursuant to Condition 14 hereof, is first made by the Purchaser to the Auctioneer. Release of lots may be withheld by the Auctioneer until personal cheques are cleared.
20. In these Conditions:—
  - (a) References to "Auctioneer" shall be taken to mean as the context so admits, the Selling Agent or any member, subsidiary or related corporation or body, officer, agent or employee thereof, authorised by the Vendor to conduct the sale of the lot;
  - (b) "Purchaser" shall have the meaning ascribed to it in Condition 1;
  - (c) "Vendor" shall mean the person or corporation upon whose account lots are offered for sale and where a stud or farm is named shall mean the proprietor of that stud or farm;
  - (d) "Lot" shall be taken to mean the animal offered for sale and/or sold by the Auctioneer on behalf of a Vendor.

.....

## IMPORTANT NOTICE

The Selling Agent, its members, subsidiary or related corporations, officers, agents, and employees for themselves and for those for whom they act while exercising due care provide all information without responsibility and give no guarantee whatsoever as to its accuracy.

All persons who attend the Sale do so entirely at their risk and the Selling Agent, its members, subsidiary or related corporations, officers, agents, employees and its principals, for themselves and for those for whom they act, do not assume or accept any responsibility or liability of whatever nature for any injury or damage whatsoever which may occur.

**BUYERS INSTRUCTION SHEET - PLEASE COMPLETE FULLY****LANCEFIELD BRAHMAN'S INVITATION SALE 2019**

Name: \_\_\_\_\_

Stud (if applicable): \_\_\_\_\_

Address: \_\_\_\_\_

\_\_\_\_\_

P/code: \_\_\_\_\_

Phone: \_\_\_\_\_ Mobile: \_\_\_\_\_

Email Address: \_\_\_\_\_

Lots Purchased: \_\_\_\_\_

\_\_\_\_\_

\_\_\_\_\_

\_\_\_\_\_

Total No: \_\_\_\_\_

Invoice to: \_\_\_\_\_

Destination Property: \_\_\_\_\_

PIC No: \_\_\_\_\_

Do you require bulls clearing dipped for entry to tick free area: Yes ☐ No ☐

Delivery Instructions: \_\_\_\_\_

\_\_\_\_\_

\_\_\_\_\_

\_\_\_\_\_

\_\_\_\_\_

Insurance: Yes ☐ Period Required: \_\_\_\_\_ No ☐

Signed: \_\_\_\_\_

Do you require Pedigree Transfer? Yes ☐ No ☐





